

Cleango 500

Compact sweeper



www.aebi-schmidt.com

 **schmidt**
a brand of aebi schmidt

In a class of its own

A compact all-rounder for the toughest demands

The Cleango 500 is an ideal choice for daily cleaning work in urban areas, on pavements and cycle paths and on industrial sites. It represents a unique combination, uniting compact dimensions with a voluminous 5 m³ debris capacity. The Cleango 500 also promises a long service life, greener engine technology (Euro 6c emissions standard) and unsurpassed driver convenience. Further advantages include its low lifecycle costs, high-quality

components and innovative technology. Thanks to the capacious debris hopper, with a system volume of 5 m³, this sweeper has a greater operational range and can pick up considerable amounts of debris. Impressively enough, this Cleango 500 has the highest payload in its class. So even when the debris collected is heavier than usual, the hopper can be filled to the brim.



Vehicle technology

- A smooth and efficient Euro 6c six-cylinder diesel engine
- Hydrostatic drive with an Eco-Drive option
- Front-axle steering, 68° steering angle, can turn in very tight spaces
- Can travel fast when not working – up to 50 km/h (60 km/h available on request)
- Large 17.5" wheels
- Hydraulic dual-circuit brake system

Disc brakes on front axle with double brake callipers for maximum safety

Drum brakes on rear axle

60



Clean environmental technology

- Euro 6c diesel engine
- Certified PM10/PM2,5
- Optimum capture of dust particles
- Targeted fresh water supply to disc brushes and suction shaft
- Clean environmental technology



Modular equipment

- Two- or three-brush system
- Low-dump or high-dump
- Transport speeds 25/40/45/50 km/h
- Polypropylene, steel or mixed material brushes
- Size-3 mounting plate
- Snow and ice options: snow ploughs (e.g. the SNK24), attachable sweeper roller brushes (from the LKS20)





Ergonomics and comfort

- Sound-proof driver's cab with optimum all-round visibility for safe operation in road traffic
- Excellent view of sweeping unit and suction shaft intake for precise control of operations
- Smooth steering
- Minimum pedal pressure required
- Ergonomic driver seat
- Height- and angle-adjustable steering column
- All operating and control instruments within optimum reach
- Air-conditioning
- Auto-Drive control lever



Quality

- Corrosion protection throughout
- High-quality branded components
- Excellent reliability
- Cost-effective operation
- Low wearing
- Long-term value retention



Sweeping technology

- Two- or three-brush system
- Towed disc brushes, 900 mm diameter
- Autonomous and synchronous disc brush control via handycontrols on driver door
- Suction intake mounted on casters
- Hydraulic adjustment of brush angle (as an option)
- Separate ground pressure adjustment for each brush (as an option)
- Sweeping on two levels
- Heavy weed removal

Blue: water

Yellow: air flow with debris transport

Green: circulated air/clean exhaust air

Uncompromising

Unmatched comfort, unique visibility

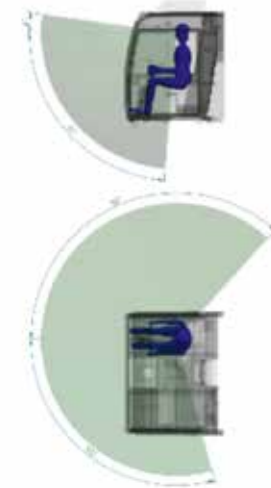
The design of the driver's cab focuses on **operational comfort and ergonomics** to lower stress during operations. The cab is accordingly spacious and has first-rate sound-proofing and vibration damping. Drivers can concentrate better, and work fast yet safely, **at a noise level of only 66 dB(A)**.

Heating and air conditioning systems keep the interior pleasant to work in. Optimum ventilation: fresh air is drawn in from above and filtered, so that the air inside the cab is always clean and low on dust in any weather. The performative, as-standard air-conditioning creates a pleasant, cool working environment even in hot conditions. All controls are set out ergonomically around the driver seat.

All the traffic-related and safety-relevant features are on the steering column.

To make driving easier, the foot movement between accelerator and brake has been ergonomically planned. Cruise control and variable adjustment on the steering column (height and angle) give added convenience.

The sweeping unit is operated via the **door control panel with joysticks and push buttons**. Key data such as driving speed, fluid levels, temperatures, engine speed and operating statuses can be viewed at a glance on the display in the overhead console. Auto-Drive is a brand-new optional feature. It centres on an ergonomic multi-function lever used to conveniently control all sweeping functions as well as driving commands when in sweeping mode. Your mechanic can carry out machine-specific settings via the **display**. The **on-board diagnostic system** enables any malfunctions to be quickly and efficiently identified.





Benefit from:

- ideal visibility, as the windscreen extends right to the cab floor.
- an observation window in the cab floor, for a clear view of the suction intake and disc brushes.
- a spacious driver's cab with pleasant interior conditions and full-size passenger seat.
- a new Schmidt steering column boasting excellent ergonomics and unique adjustment options, making it easier to get in and out.
- unmatched ease of use and the quietest cab in its class.
- a slim steering column with only minimal controls, and large wing mirrors, giving the driver a perfect view of both working area and surroundings.
- an ergonomic, comfortable, well-sprung driver's seat, individually adjustable.
- cruise control.

Flexible sweeping system

A flexible sweeping system helps ensure thorough cleaning in any situation. The towed disc brush system, mounted in front of the front axle, achieves a **sweeping width of 2,200 mm**. As brushes are towed and not shunted, there is significantly less collision damage and considerably reduced wear on the brushes. The entire sweeping unit can be **hydraulically shifted 300 mm to each side**. The suction intake and disc brushes form a single unit, while the parallelogram-type brush unit suspension guarantees optimum tracking and thus coverage to the suction intake. Brush ground pressure is adjusted hydraulically on the control panel in the driver's cab.



Benefit from:

- a towed brush system (helps prevent damage from collisions).
- a third, front-mounted brush for sweeping on two levels.
- excellent suction performance and fast operation at the same time. The fan speed can be easily adjusted to almost any level.
- a thorough way to sweep out 90° corners.
- option to carry out weed-removal work.
- a towed suction shaft mounted behind the brush but in front of the front axle, carried on casters at a constant height from the ground.
- a capacious gate for bulky debris, so that even larger items can be cleared away.





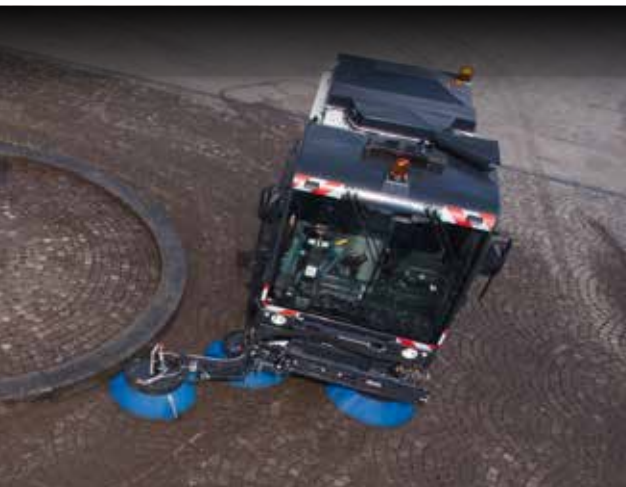
With the optional, autonomous brush control system, the angle of the disc brushes can be hydraulically adjusted to the road conditions from the driver's cab. Ground pressure on each disc brush can also be adjusted individually from the driver's cab. This makes it even easier to thoroughly sweep out right-angled corners, gutters and hard-to-reach areas.

With the optional third brush, the span swept **can be as wide as 3,550 mm**. This gives scope for **better coverage rates** (up to 64,000 m²/h), sweeping on **two levels**, as well as **efficient sweeping** of surfaces that are heavily encumbered by street furniture and so have to be worked in small sections.

The sturdy arm carrying the front brush can be used on **both the left and right** of the machine and can also carry out heavy-

duty weed-removal. All functions of the front-mounted brush, including the brush ground pressure, are controlled hydraulically.

The high suction performance means that the Cleango 500 can sweep at high speeds and easily collect even large amounts of dirt. The fan speed can be easily adjusted to almost any level, allowing the driver to react fast in varying conditions. In addition, the flow-optimised configuration ensures that sweeping performance remains just as effective even at low fan speeds and with reduced fuel consumption.





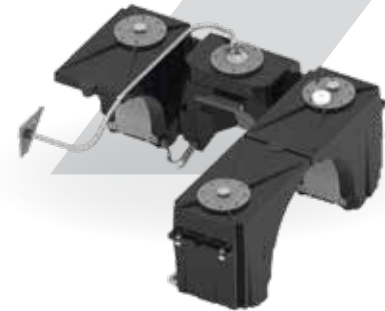
Thoroughly thought through

The sizeable debris hopper with a system volume of 5 m³ allows for a greater operational range and removal of considerable amounts of debris. Impressively enough, this Cleango 500 has the highest payload in its class. So even when the debris collected is heavier than usual, the hopper can be filled to the brim.

The **low-dump system comes as standard**, and a high-dump system with slide gate for emptying containers is available as an option. The tailgate is always locked hydraulically, with a sturdy rubber gasket for a water-proof seal between tailgate and hopper. The leaf screen covers the full width and length of the hopper, meaning that the hopper capacity can be exploited to the full. This large surface area effectively prevents the screen from clogging up, and ensures that airflow remains constant when the hopper is 100% full. The screen can be

conveniently folded down for cleaning. An automatic screen clearing system for the front part of the screen is available as an option.

The Cleango 500 comes as standard with a **685-litre fresh water system** (1,835-litre capacity available as an option). A high-performance pump feeds water to two spray nozzles in each disc brush and two nozzles in the suction shaft. The Cleango 500 can also be fitted with a water recirculation system, which carries process water from the hopper right back to the suction shaft. This saves on fresh water and also facilitates optimum utilisation of hopper capacity. The collected debris is both wetted and compacted to help ensure that only clean air with low particulate levels is released.



Safety, reliability, comfort

The Cleango range uses only high-quality components from selected brand-name manufacturers.

Effective corrosion protection, to ensure long-term use in any weather, is a top priority. The vehicle frame is made of high-strength steel and is primed and painted using painstaking methods. The hopper frame is also made to a sturdy design in wet-painted steel. The bottom and sides of the hopper are lined with either aluminium or stainless steel plates as required. Alternatively, we can manufacture the hopper entirely in stainless steel.

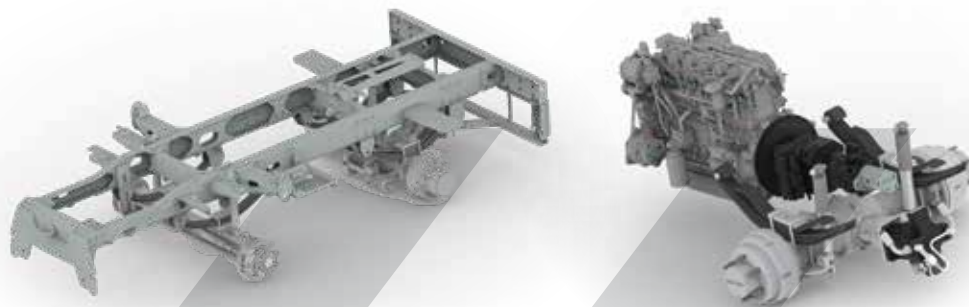
The hydraulic tank is also made of hard-wearing stainless steel, while the side and rear water tanks are done in solid, shock-resistant plastic.

The ladder frame forms the skeleton of the Cleango 500 and is made of high-strength steel. This ladder-type frame design is valued in truck manufacturing and has proved its worth over many years. The Cleango frame is thus notably lightweight, solid and reliable. C-channels in the frame provide maximum stability and torsional rigidity. With its modular design, the Cleango series is a sound base for future improvements and modifications.

The suspension on the Cleango 500 uses leaf springs and hydraulic shock absorbers at the front and rear. This suspension package is perfectly calibrated for the Cleango sweeper, and helps make driving this machine safe and comfortable.

The Cleango 500 is powered by a highly efficient and powerful **Euro 6c diesel engine** featuring the very latest exhaust gas purification system with diesel oxidation catalyst, a closed particulate filter system as well as urea injection (AdBlue) and SCR catalyst. The smooth and powerful six-cylinder engine is unique in this class of machine. Together with the newly designed hydrostatic drive including Eco-Drive, it makes for comfortable and economical driving. Engine speed is reduced on transport runs, cutting fuel consumption by up to 20%. Transport speed is **variable up to 50 km/h**, or even 60 km/h on request. The Euro 6c engine with its AdBlue tank is optimally mounted on the chassis, so that the Cleango maintains its optimum agility and manoeuvrability.

The Cleango 500 features a hydraulic dual-circuit brake system with disc brakes at the front and drum brakes at the rear, as well as an automatic load-related braking valve on the rear axle. This feature is available as an extra, or depending on the equipment options chosen. A cutting-edge system that gives the driver excellent vehicle control. The **large 17.5" heavy-duty wheels** help make driving safer, even in poor road and weather conditions.





Benefit from:

- first-rate corrosion protection.
- selected brand-name components.
- excellent reliability.
- safe and comfortable driving.
- the highest payload in its class. With its rugged suspension, capacity for high axle loads, and twin tyres on the rear axle, the Cleango 500 can carry payloads of up to 6.6 tonnes.
- A broad 68° steering angle, combined with the short 1,850 mm wheelbase, facilitates an extremely small turning circle: sweeping continues while the sweeper turns in one go.
- certified PM10/PM2,5

Broaden your sweeping horizons

- Sound-proofing package
- Automatic central lubrication system
- LED lighting package
- Ice and snow attachments
- Front-mounted brush
- Additional water tank (for top and sides)
- Hand-held suction hose
- Roof outrigger with high pressure lance
- Front brush
- High-pressure cleaner
- Reversing and suction shaft camera
- Weed brush





Technical specifications

| | Cleango 500 Euro6c |
|---|---|
| Hopper | |
| System volume approx. | 5 m³ |
| Discharge angle (low dump) | 55° |
| Discharge height (low dump) | 1,100 mm |
| Discharge height (high dump) | 1,100 – 1,820 mm |
| Drive system | |
| VM R756 Euro 6c with closed particulate filter system, urea (AdBlue) injection and SCR catalyst | 120 kW (163 hp), 4,455 cm³ displacement, six cylinders, 500 Nm at 1,400 rpm |
| Sweeping unit | |
| Disc brush diameter/speed approx. | 900 mm, max. 140 rpm |
| Brush material | polypropylene, steel or mixed material |
| Sweeping width | 2,200 mm |
| Sweeping width with third brush | 3,550 mm |
| Fan speed max. | 3,400 rpm |
| Water | |
| Water tank volume approx. | 685 l |
| Water spray system | 3.4 bar/15 rpm |
| Speeds | |
| Transport max. | 25/40/45/50 km/h (60 km/h on request) |
| Sweeping max. | 12 km/h (18 km/h as an option) |
| Weights | |
| Tare weight | 5,500 kg |
| Total permissible weight up to 40 km/h | 12,100 kg |
| Total permissible weight up to 50 km/h | 11,500 kg |
| Dimensions | |
| Length without third brush | 4,473 mm |
| Length with third brush | 5,485 mm |
| Width without brush | 1,810 mm |
| Height with rotating beacon | 2,707 mm |
| Wheelbase | 1,850 mm |
| Track width front | 1,600 mm |
| Track width rear | 1,310 mm |
| Steering | |
| Steering angle | 68° |
| Turning circle kerb to kerb | 5,950 mm |
| Turning circle wall to wall | 7,250 mm |



'We were particularly impressed with the simple, straightforward control system. There are only a minimum of controls, and the joystick makes one-handed driving and sweeping a piece of cake for the driver. I was also pleasantly surprised by how reliable the sweeper has proven to be. It is certainly much better than any model we have had before. I am the workshop manager and have been with the company for 31 years, so I know what I'm talking about.'

Beat Bienz, Lucerne municipal maintenance depot (Switzerland)



'The control system is very intuitive. The controls on the Cleango and the Schmidt Swingo are practically identical, making it easier to swap personnel between units. The noise levels in the cabin are also lower than for any other machine we've had in this class. The cockpit is neat, well laid-out, and ergonomically designed. As we use the big sweeper to clean underground collection points and glass collection points, the Cleango's enormous suction power was a real selling point.'

Regina Wenk, Aarau municipal maintenance depot (Switzerland)



As of early 2018, 14 new Schmidt Cleango 500 sweepers have been added to the fleet at EMPRESA MUNICIPAL D'AIGÜES I CLAVEGUERAM (EMAYA) in Palma de Mallorca. Alongside several Schmidt Swingo 200+, SK500 and SK650 attachable sweepers, they will now be helping to make sure that the streets of Mallorca's capital are clean all year round.



'We're very satisfied with this machine, it's working even better than we expected. The Cleango's great suction was thoroughly tested throughout autumn. But even in heaps of fallen leaves, the Cleango was more than impressive and finished the job very well.'

Tim van der Noll, Westland municipality (Netherlands)



Scan to discover Aebi Schmidt on YouTube.

Aebi Schmidt Holding AG
Marketing and Communication

Technical data is subject to change.
Illustrations are not binding.

Status 03/2019 Copyright © Aebi Schmidt Holding AG.
All rights reserved. Errors and amendments excepted.

 **aebi schmidt**
group

www.aebi-schmidt.com