

ML Series

Yb: Fiber Laser Markers



The ML Series laser engravers combine cutting-edge technology with industrial robustness for a wide range of marking applications. This versatile series has numerous performance options to match the right laser to the application. The system is designed with multiple integration options to suit standalone operation, full production automation and prototype development. Owners of the ML Series fiber lasers also benefit from AMADA MIYACHI EUROPE's commitment to providing industry-leading customer support.

KEY FEATURES

- 10-70 W fiber laser markers
- High-power, high-speed laser marking system for metals, plastics and ceramics
- Excellent contrast and crispness of annealed and engraved marks
- Air-cooled, sealed industrial package designed for operation in harsh environments
- Powerful control software with industry standard Windows® based programming
- Multiple integration options to match application needs
- Complies with IEC13849-1 category 3 PLd safety circuitry with proper integration
- Optional Marker Motion™ unit comes with integrated stage controllers for up to 4 axes

TYPICAL APPLICATIONS



Corrosion resistant marking for medical tools & instruments



Implantable medical devices



Metal engraving for automotive and UDI applications



Electrical components



Plastic housings

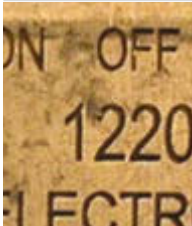








Cutting of thin metals

LASER SELECTION GUIDE

AMADA MIYACHI EUROPE offers a wide range of lasers to correctly match any marking application. The table below highlights the choices in laser power and typical applications for each laser.

Contact us for a free of charge feasibility study and advise on the optimal laser for your specific application.

ML-7311D	ML-7321D	ML-7322D	ML-7320D	ML-7340D	ML-7350D	ML-7370D
10 W Marking System	20 W Marking System	20 W Precision Marking System	20 W Marking System	35 W Advanced Marking System	50 W Marking and Engraving System	70 W Advanced Processing System
						
<i>Entry level Marking</i>	<i>Marking on Metals</i>	<i>Precision Marking for Smallest Feature Size</i>	<i>Marking on Metals and Plastics</i>	<i>Marking on Plastics and Large Area Annealing</i>	<i>Engraving of Stainless Steel</i>	<i>Marking, Welding and Cutting of Metal</i>

LASER/SYSTEM SPECIFICATIONS

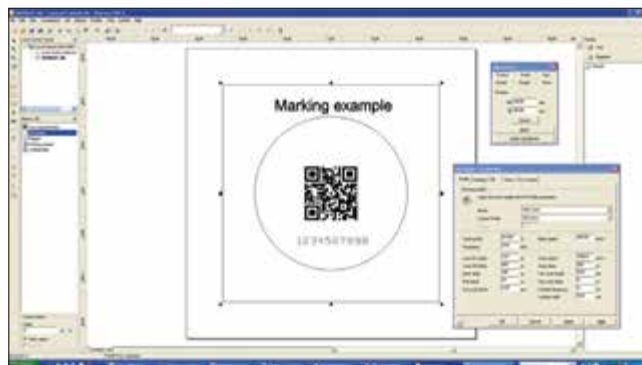
	F-Theta Output Lens			
	100 mm	160 mm	254 mm	420 mm
Field size	62 mm x 62 mm (2.42 in x 2.42 in**)	99 mm x 99 mm (3.89 in x 3.89 in)	157 mm x 157 mm (6.18 in x 6.18 in)	291 mm x 291 mm (11.44 in x 11.44 in)
Working distance*	98 ± 1 mm (3.86 ± .04 in)	176 ± 2 mm (6.93 ± .08 in)	296 ± 3 mm (11.65 ± .12 in)	494 ± 5 mm (19.45 ± .20 in)
Lens diameter	90 mm (3.54 in)	90 mm (3.54 in)	120 mm (4.72 in)	120 mm (4.72 in)
Wavelength	1064 nm ± 5 nm			
Nominal power/ frequency range	ML-7311D – 10 W / 20 - 200 kHz ML-7321D – 20 W / 20 - 200 kHz ML-7320D – 20 W / 2 - 500 kHz, CW ML-7322D – 20 W / 2 - 500 kHz, CW (Single mode) ML-7340D – 35 W / 2 - 500 kHz, CW ML-7350D – 50 W / 50 - 200 kHz ML-7370D – 70 W / 2 - 500 kHz, CW			
Guide laser	Diode 630 - 650 nm			

* Working distance is the distance from the focus point to the lens assembly. Error value of the working distance does not relate to the process depth of focus.
 52 mm x 52 mm (**2.04 in x 2.04 in) for 35 W version

SOFTWARE FEATURES

- Powerful, user-friendly Windows®* based job editor
- WYSIWYG “What-You-See-Is-What-You-Get” editing
- Easy to import graphics
- Multi-Language support
- Advanced DXF filter with process optimization
- Password protected security lockout
- Windows Software platform

*Windows® is a registered trademark of Microsoft Corp.



MARKING OPTIONS

- 4-axis motor control, XYZ and rotary stages (optional)
- XYZ and rotary stages (optional)
- Automation: I/O control, time delays, and custom operator messages
- On-the-fly-marking (optional)
- Accepted file types: .dxf, .dwg, .plt, .emf, .wmf, .bmp, .jpg, .gif, .cdr and .ai

MARK TYPES

- Line-art graphics: CAD, line-drawings, logos
- Shaded graphics: photos, halftones & grayscale artwork
- TrueType®* fonts, filled or outline-only
- Single point or drill object arrays
- Data Matrix, QR, barcodes (1D and 2D)
- MS AutoDate, MS TextMerge, TextMergs and serialization

*TrueType® is a registered trademark of Apple, Inc.

MARKER MOTION™

- Laser marking systems are often required to control one or more motors or actuators to execute complex production sequences. ML Series Fiber Laser Markers have an integrated motion system allowing the user to control up to four stepper motors (typically XYZ and Rotary) with integrated controllers using a the WinLase®* software interface for easy configuration and control without extensive hardware requirements.
- Step and repeat marking
- Focal plane height adjust - adjust the height of the marker head to pre-programmed static positions to accommodate marking surfaces at different heights above the tooling plane
- Rotary - rotate a circular cylindrical part while marking to ensure mark completely wraps around part with no distortion or areas out of focus

*WinLase® is a registered trademark of Lanmark Controls, Inc.



INTEGRATION

AMADA MIYACHI EUROPE offers the widest range of integration options to match any laser marking or laser engraving application. Whether working in a job shop or fully automated production line, our markers are designed with the integrator in mind and include several input/output options including RS-232, Ethernet, and safety interlocks. In addition, AMADA MIYACHI EUROPE offers a wide range of accessories for marking workstations including standard and custom Class 1 enclosures.



CONTROLLED BY PC/ TOUCHSCREEN INTERFACE

Ideal for:

- Small lot marking
- Application labs/ job shops
- Jobs with barcode scanners
- Semi-automatic workstations



CONTROL THROUGH PLC

Ideal for:

- Production lines
- Machine controlled processes
- Low-level operators
- High speed and part throughput
- On-the-fly marking (optional)

TECHNICAL SPECIFICATIONS

Parameter	
Pump source	Laser diode
AC Power	Single Phase, 90-130 VAC/180-260 VAC, 50/60 Hz, 10 A
Environment Temperature	15°- 35° C (59°-95° F)
Environment Humidity	Less than 90% RH (non-condensing)
Cooling	Air cooled

According to DIN EN 60825-1:2014



WEIGHT & DIMENSIONS

	Controller	Microhead
Dimensions	670.9 mm x 431.8 mm x 186.1 mm (26.4 in x 17.0 in x 7.3 in)	215.6 mm x 77 mm x 107.2 mm (8.49 in x 3.03 in x 4.22 in)
Weight	27.7 kg (61 lbs)	3.8 kg (8.4 lbs)



Lindberghstrasse 1 • DE-82178 Puchheim, Germany
 T: +49 (0) 898 394 030 • Fax : +49 (0) 898 394 0368
 info@amadamiyachi.eu • www.amadamiyachieurope.com
 ISO 9001 Certified Company



EUROPE
 Amada Miyachi Europe BV
 Helmond, The Netherlands
 T: +31 (0) 492 542 225
 info@amadamiyachi.eu

Amada Miyachi Europe
 Tremblay-en-France, France
 T: +33 (0) 149 903 000
 info@amadamiyachi.eu

Amada Miyachi Europe Kft.
 Budapest, Hungary
 T: +36 1 431 9927
 info@amadamiyachi.eu

Amada Miyachi Europe
 Torino, Italy
 T: +39 011 223 83 16
 info@amadamiyachi.eu

Amada Miyachi Europe
 Mildenhall, United Kingdom
 T: +44 (0) 1638 510 011
 info@amadamiyachi.eu

Amada Miyachi Europe
 Prague-West, Czech Republic
 T: +420 251 512 157
 info@amadamiyachi.eu

AMERICAS
 Amada Miyachi America
 Inc.
 Monrovia, CA, USA
 T: +1-626-303-5676
 info@amadamiyachi.com

Amada Miyachi do Brasil
 Ltda.
 Sao Paulo, Brasil
 T: +55-11-4193-1187
 antonio.ruiz@miyachi.com

ASIA
 Amada Miyachi Co., Ltd.
 Noda, Japan
 T: +81-4-7125-6177
 sales@miyachi.com

Amada Miyachi Shanghai,
 Co., Ltd.
 Shanghai, China
 T: +86-21-6448-6000
 zqzhang@msc.miyachi.com

Amada Miyachi Korea
 Co., Ltd.
 Gyeonggi-do, Korea
 T: +82-31-8015-6810
 dykim@mkc.miyachi.com

Amada Miyachi Taiwan
 Co., Ltd.
 Taipei, Taiwan R.O.C.
 T: 886-2-2397-4778
 keigaku@miyachi.com

Amada Thailand Co., Ltd.
 Samutprakarn, Thailand
 T: +66 (0) 2-170-5977
 info@mtl.miyachi.com

Amada Vietnam Co., Ltd.
 Ha Noi, Vietnam
 T: +84 4 6261 4583

Amada Miyachi India
 Pvt., Ltd.
 Bangalore, Karnataka
 T: +91 70 220 216 34
 info@miyachindia.com

All data, images and text are subject to change at any time. Amada Miyachi Europe GmbH reserves the right to change, modify, delete and add technical specifications and product details at any time without prior notification. © 2018 Amada Miyachi Europe GmbH.

