

Wireless Remote Data Collection



*Utilising GPRS network to output data from T24 inputs to servers, email address and mobile phones*



**User benefits**

- Ideal for remote applications
- Wireless input range of up to 200m
- Output data to anywhere in the world
- Collect data from up to 200 sensors
- Re-configure settings remotely using SMS
- Alert functionality
- Free software

**Ideal applications**

- Alternative Measurement
- Lifting & Handling
- Waste Management
- Civil Engineering
- Silo & Weighing
- Construction

**Introduction**

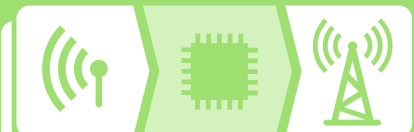
The remote data acquisition system has been developed to utilise the existing GPRS network to enable remote monitoring for a wide number of applications using Mantracourt's wireless T24 inputs.

Using a Quad Band GPRS modem, the wireless data collector allows users to log and report data to multiple destinations including servers, email addresses and mobile phones, allowing for world wide access to data for recording and monitoring.

All data is time and date stamped and sent to destinations at regular intervals. Measurements are also compared to user defined limits which can trigger alert messages allowing real time monitoring of an entire system.

**Specification at a Glance**

- Data delivery via email, FTP, SMS and HTTP Post
- Date and time stamped data
- Uses licence free 2.4 GHz radio
- Powered by external power supply
- Power saving mode
- Data can be transmitted up to once a minute
- IP65 /NEMA 4 rated enclosure (including antenna) 210 x 190 x 55 mm



## Related Product



**T24-WSS**  
Wind Speed Sensor (Anemometer)



**T24-BSu**  
USB Base Station to configure and calibrate T24 products



**PP1 & SP1**  
Solar and Battery Packs for remote use



**T24 Modules**  
A range of Mantracourt modules are available for measuring current, pulse, potentiometer, strain gauge, temperature and voltage

## Free Software



**T24 Toolkit**  
Software used to calibrate and configure your T24 devices

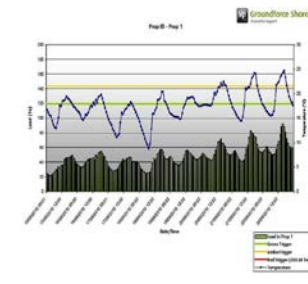
## Case Study

### The Application:

A company in the construction industry required a system to remotely monitor shoring struts. The monitoring of their construction shoring struts was critical especially in the use of heavy duty hydraulic bracing, strutting in construction pits and excavations.

### The Solution:

By incorporating Mantracourt technology into a load sensing pin, located in the end swivel connection of the prop, the customer was able to use these load pins to transmit data directly to a T24-RDC. This comprehensive and fully automated remote monitoring service was tailored to suit the customer's specific requirements. The T24-RDC and battery pack was conveniently located on site and within range for the pins.



The unit automatically gathers data at pre-set intervals, and transfers the data via a mobile network (GPRS) to an SMS number and an email account. This could also have been sent to a FTP site or to a HTTP POST.

## CE & Environmental

Storage temperature	- 40 to +85°C
Operating temperature	- 40 to +85°C
Relative humidity	95% maximum non condensing
IP rating	IP65 / NEMA 4

### CE Environmental Approvals

European EMC Directive	2004/108/EC
Low Voltage Directive	2006/95/EC

*For more information contact us today...*

mantracourt.com  
technical@mantracourt.com  
Mantracourt Electronics Ltd  
The Drive, Farringdon, Exeter,  
Devon, EX5 2JB, UK  
tel: +44 (0) 1395 232020  
fax: +44 (0) 1395 233190



In the interests of continued product development, Mantracourt Electronics Limited reserves the right to alter product specifications without prior notice