

Kaiser. Performance counts.



EcoCombi

Reliable in the toughest conditions

**COMBINED SEWER CLEANING
& WATER RECYCLING**

ALL DETAILS AT A GLANCE



Suction boom KSR10



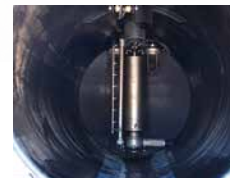
Suction/pressure changeover head



Hose reel



Lock ring



ROTOMAX filter system



Tipping system

TECHNICAL SPECIFICATIONS AND EQUIPMENT

EcoCombi

	2-Axle Truck	3-Axle Truck
Tank volume (L)	9000	10500
Payload (kg)	4500	10500
Dimensions LxBxH(mm)	8800x2500x3540	9300x2500x3500
Short wheelbase (mm)	4500	3900+1400

Tank superstructure

- › Sludge tank in carbon steel
- › Fresh water chamber with built-in vacuum pump
- › Separator with automatic drainage
- › Tank cover with lock ring
- › Tipping system for complete emptying of the tank

Option

- › Sludge tank in stainless steel
- › Suction tube holders, tiltable or fix mounted on the tank side

Control system

- › Integrated control panels at jetting hose reel and at the rear

Remote control (option)

- › Suction boom control
- › Hose reel control
- › Vacuum and high-pressure pump
- › Start/stop and speed control for diesel engine

High-pressure System

- › KAISER high-pressure water pump KDU168 with a jetting capacity of 320 litres per minute and a maximum pump pressure of 200 bar
- › ROTOMAX water recycling system with backflushing device
- › Jetting reel to take 120 m 1" HD jetting hose and with 180° hydraulically swivel
- › Tank cleaning nozzles
- › Tank dewatering system

Option

- › Jetting capacity of 350 litres per minute
- › Winter protection, optionally up to -5° or -15° Celsius
- › Hand reel to take 40 m or 80 m ½" HD jetting hose

Vacuum system

- › KAISER water ring vacuum pump KWP1600 with a suction capacity of 1600 m³/h and a maximum vacuum of 0.8 bar
- › Telescoping suction boom KSR10 with 300° hydraulically swivel and up/down function
- › Changeover head for fast switch from suction to pressure mode

Option

- › Suction capacity 2000 m³/h or 3100 m³/h

FOR YOUR APPLICATION THE SUITABLE KAISER PRODUCT

RECYCLING VEHICLES



Top performance and reliability under the most difficult sewer conditions.

- AquaStar
- Eco 3.0
- EcoCycler
- CityCycler
- EcoCombi
- CityCleaner

WATER TREATMENT VEHICLES



Water treatment by means of flocculation.

- AquaStar WT
- KoIDry

COMBINATION VEHICLES



Flexibility to handle a wide range of applications.

- Elegance 2.0
- AquaStar
- Combi Eur-Mark
- Tornado
- BasicLine

JETTING AND VACUUM VEHICLES



Designed to meet the highest performance requirements in the respective field.

- Tornado
- Elegance 2.0
- Twister
- Special vehicles

DRY VACUUM VEHICLES



High-performance vacuuming of dry and wet materials.

- Cerberus
- Hercules

HYDROVACS



High productivity with a rugged and reliable technology.

- CV-Series
- Urban X

MOBILE-WALKING EXCAVATOR



Impressive technology to master tough challenges.

- S12 Allroad
- S12 4x4
- S10
- S2

ROAD-RAIL EXCAVATOR



Perfectly matched to the application of the railway environment.

- S22RR

Subject to change without notice. Technical specifications may change, depending on the chosen options and accessories. All photos and diagrams are for illustration only.