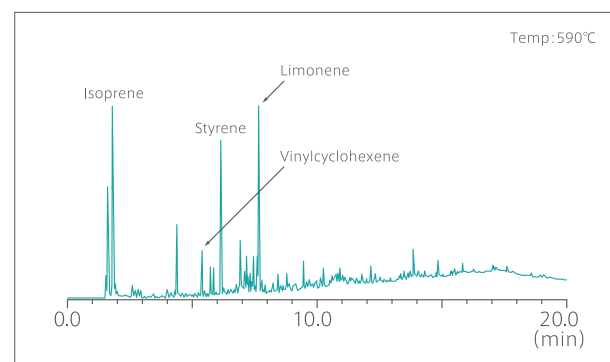


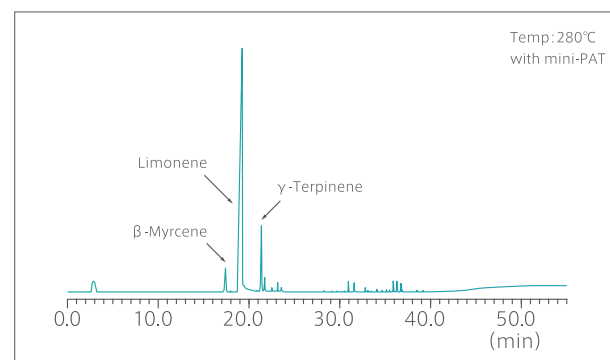
## Applications

### 1 | Py-GC of vulcanized rubber



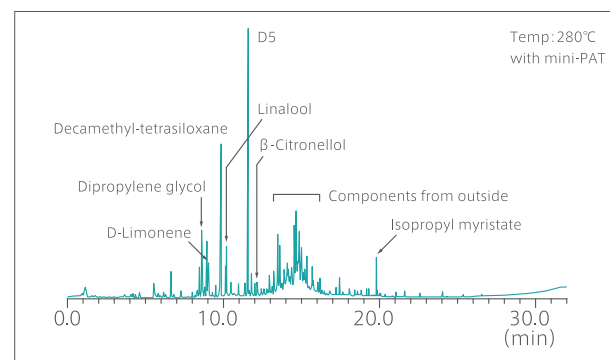
Excellent quantitativity as the sample tube and needle can be changed each time of analysis, especially for materials like vulcanized rubbers.

### 3 | Odor analysis of food



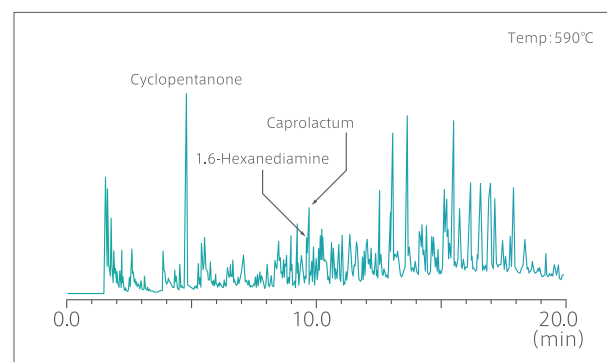
Analysis of flavor components of orange marmalade.

### 5 | Indoor atmosphere analysis



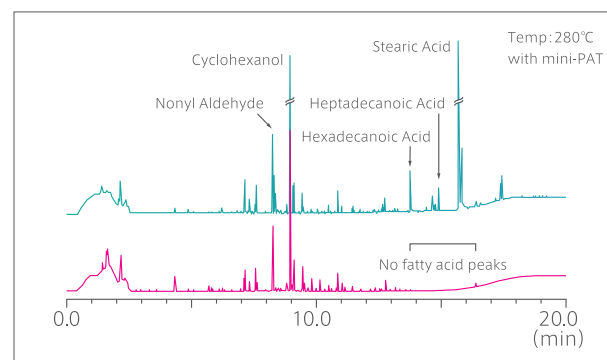
Analysis of indoor atmosphere collected by JAS-50MP air sampler. Cosmetics components were detected.

### 2 | Py-GC of Nylon6.6



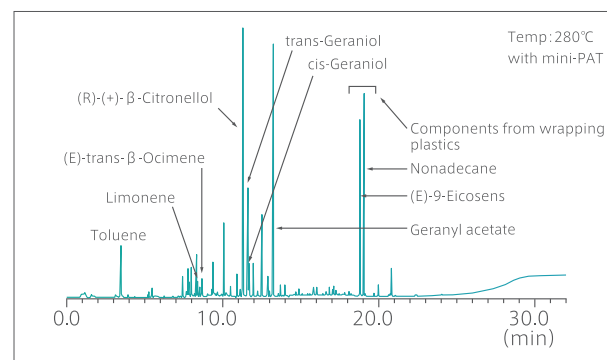
Higher preheating temperature prevents decomposition residues, which leads to better quantitativity and reproducibility for polymers like Nylon-6, -6.6, -10 and MXD, etc.

### 4 | Test of deodorant spray effectiveness



Odor analysis of underwear worn whole day, one was analysed as it is (above) and the other was analysed after deodorant was sprayed (below).

### 6 | Odor analysis of flower



Analysis of air nearby rose pistils collected by JAS-50MP air sampler.



## Curie Point Injector JCI-77

for GC, GC/MS



**JAI** Japan Analytical Industry Co., Ltd.

208 Musashi, Mizuho, Nishitama, Tokyo 190-1213 JAPAN TEL +81-42-557-2331 FAX +81-42-557-1892

For inquiries or information  
**+81-42-557-2331**

Visit our web site and contact us  
**<https://www.jai.co.jp/english>**

# Advanced portable pyrolyzer

New model with further consumated quantitativity, reproducibility and usability.

The world's first portable injector that is able to inject solid, liquid or VOC samples into GC/MS in the same manner as a micro syringe injection.

## Features

### Higher Preheating Temperature

Preheating temperature for sample tube (sample chamber) can be raised up to 250°C, 100°C higher than the previous model. Quantitativity and reproducibility have been further improved.

### Improved Usability

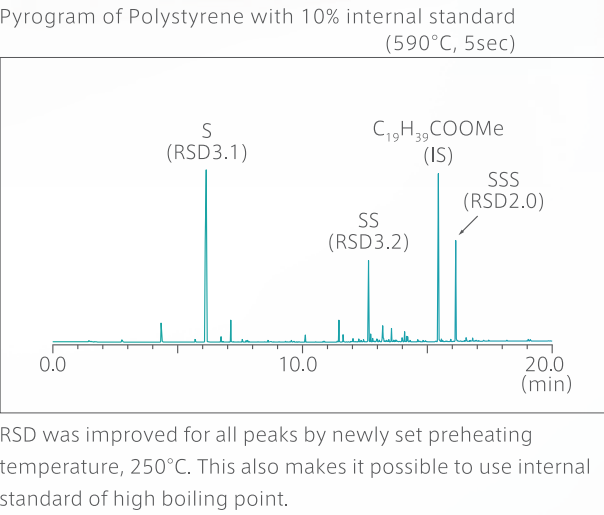
You can start the entire analysis process with just one touch on [Auto Start] button. (No need to do it twice for preheating and sample injection any more.)

### Sample Tube Baking Mode

Able to bake mini-PAT (TenaxGR). The baking procedure is pre programmed and requires a simple one push of button.

### Solvent Purge Mode

Able to remove water and/or solvent trapped in mini-PAT before analysis of VOC.



## Various Usage

### Pyrolyzate analysis

Excellent composition analysis of synthetic polymers and vulcanized rubbers. Analysis of derivatization pyrolyzate and evolved gas is also possible.



Crimp with Foil crimper



Weigh the sample

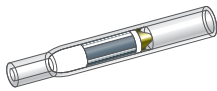


Fold the foil over the sample

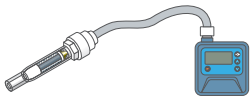
Place the foil in a sampletube and set to JCI-77

### VOC analysis

For work environment air analysis and general odor analysis.



mini-PAT (Sample tube with TenaxGR and 280°C Pyrofoil)

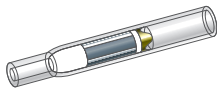


Suck air using mini-PAT and JAS-50MP

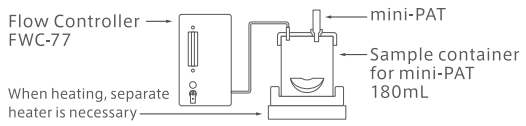
Place the mini-PAT to JCI-77

### Outgas Analysis

For analysis of odors of cosmetics/food and gas evolved from electronic devices.



mini-PAT (Sample tube with TenaxGR and 280°C Pyrofoil)



Place a sample in the sample container for mini-PAT and send purge gas to collect outgas components

Place the mini-PAT to JCI-77

### Indicator

Shows status

### Start button

Completes operation with a single touch

### Probe

Compact and easy to handle

### Pyrofoils

Reaches to target temperature in 0.2 second (Temperature shown table below)

### Sample tube (or mini-PAT)

Holds sample wrapped with Pyrofoil

### Needle

Pyrolyzed sample injected to GC port through the needle

### Pyrofoils

Pyrofoils of 21 different pyrolysis temperatures are available. When using the Pyrofoils, unlike F-Py, it heats up samples instantly to the target temperatures shown in the table.

Pyrolysis Temp.		
1040°C	500°C	315°C
920°C	485°C	280°C
764°C	445°C	255°C
740°C	423°C	235°C
670°C	386°C	220°C
650°C	358°C	170°C
590°C	333°C	160°C

# Specifications

Probe	
Heating System	Curie point heating
Pyrolysis	Pyrofoils from 160°C to 1040°C
Preheating	250°C
Transfer line (Needle upper part)	300°C (at the time of Curie point heating)
Sample Tube	Quartz glass, OD 5.5mm, Length 36mm
Needle	Needle (OD 0.47mm, Length 42mm)
Connection Cable	1.5m
Dimensions	OD 38mm, Length 160mm
Weight	110g
Power	Supplied from controller

Controller	
RF Power	48W,600kHz
Pyrolysis time	5sec, 10sec, 15sec, 30sec.
Output Signal	GC start signal
Mode selection	Analysis Mode
	Baking Mode
	Solvent purge Mode
Carrier Gas	He or N <sub>2</sub> (0.5MPa or more)
Dimention	W140 x D347 x H246 mm
Weight	7Kg
Power	AC85-240V 500VA(Max)

Standard accessories	
Sample Tube	4ea
mini-PAT with TenaxGR	1ea
Needle for JCI series	5ea
Sample Tube Guide	2ea
Pyrofoil*	1ea
Pyrofoil Set	1p/k
Foil Crimper	1ea
Titanium Tweezers	1ea
Flat Nose Pliers	1ea
Syringe for Needle Cleaning	1ea
Sample Tube Stand	1ea
GC Start cable	1ea

\* Temperature can be selected

## Optional accessories

### Air Sampler JAS-50MP with mini-PAT fitting

Useful for collecting environmental odor components. Automatic collection completes with a few parameter setting.



JAS-50MP	
Flow rate	0.050-5.00L/min
Flow rate accuracy	±5% or less than 5mL/min
Dimensions	W95 x D56 x H95 mm without protuberance
Weight	0.45Kg including NiMH battery
Power	AC Adapter (100V AC), NiMH Rechargeable Battery NI-W5, 6 AA Batteries

Other optional accessories	
mini-PAT with TenaxGR	
Sample container for mini-PAT (180mL, PFA)	
Sample container for mini-PAT (100mL, Glass)	
Sample container for mini-PAT (50mL, Glass)	
Flow Controller FWC-77	
Outgas Collector (Refer to the separate catalog)	
Foil Folder	
Foil Crimper for Liquid Sample FC-10	