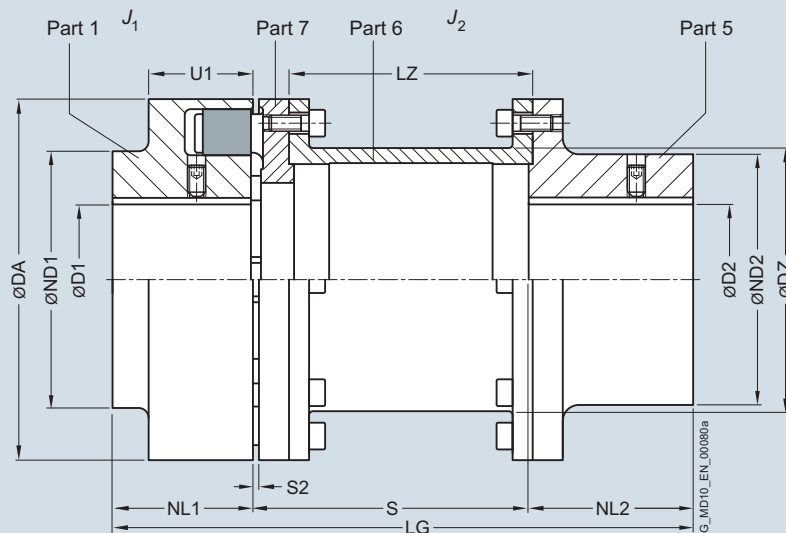


FLENDER Standard Couplings

Flexible Couplings – N-EUPEX and N-EUPEX DS Series

Type H

Selection and ordering data



For dimension U1, see type A

Size	Rated torque flexible type 80 ShoreA T_{KN} Nm	Speed n_{Kmax} rpm	Dimensions in mm														Mass moment of inertia		Article No. Order codes for bore diameters and tolerances are specified in catalog section 3	Weight m kg		
			Bore with keyway to DIN 6885														J_1	J_2				
			D1 min.	D2 max.	DA	ND1	ND2	NL1	NL2	S2	S	LZ	DZ	LG	J_1	J_2						
80	60	6000	-	30	-	32	80	80	55	30	45	5	100	87	51	175	0.0006	0.001	2LC0100-2AG ■ ■ -0AA0	2.6		
													140	127		215	0.001	0.001			2LC0100-2AG ■ ■ -0AB0	2.7
95	100	5500	-	42	-	42	95	76	70	35	45	5	100	87	63	180	0.001	0.003	2LC0100-3AG ■ ■ -0AA0	3.5		
													140	127		220	0.003	0.003			2LC0100-3AG ■ ■ -0AB0	3.8
110	160	5300	-	48	-	48	110	86	80	40	50	5	100	85	73	190	0.003	0.005	2LC0100-4AG ■ ■ -0AA0	5.2		
													140	125		230	0.006	0.006			2LC0100-4AG ■ ■ -0AB0	5.4
													180	165		280	0.006	0.006				
125	240	5100	-	55	-	55	125	100	90	50	50	5	100	85	85	200	0.005	0.01	2LC0100-5AG ■ ■ -0AA0	7.2		
													140	125		240	0.01	0.01			2LC0100-5AG ■ ■ -0AB0	7.7
													180	165		290	0.011	0.011				
													200	185		320	0.012	0.012			2LC0100-5AG ■ ■ -0AD0	8.5
													250	235		380	0.012	0.012				
140	360	4900	-	60	-	60	140	100	100	55	65	5	100	82	91	220	0.007	0.018	2LC0100-6AG ■ ■ -0AA0	10.0		
													140	122		260	0.019	0.019			2LC0100-6AG ■ ■ -0AB0	10.5
													180	162		300	0.02	0.02				
													200	182		320	0.021	0.021			2LC0100-6AG ■ ■ -0AD0	11.3
													250	232		385	0.022	0.022				
160	560	4250	-	65	-	65	160	108	108	60	70	6	100	81.5	111	230	0.013	0.03	2LC0100-7AG ■ ■ -0AA0	13		
													140	121.5		270	0.032	0.032			2LC0100-7AG ■ ■ -0AB0	13.7
													180	161.5		310	0.034	0.034				
													200	181.5		330	0.035	0.035			2LC0100-7AG ■ ■ -0AD0	14.9
													250	231.5		390	0.037	0.037				
180	880	3800	-	75	-	75	180	125	125	70	80	6	140	121.5	131	290	0.023	0.054	2LC0100-8AG ■ ■ -0AB0	18.5		
													180	161.5		330	0.058	0.058			2LC0100-8AG ■ ■ -0AC0	19.4
													200	181.5		350	0.060	0.060				
													250	231.5		400	0.065	0.065			2LC0100-8AG ■ ■ -0AE0	22

- | | | |
|------|--|---|
| ØD1: | • Without finished bore – Without order codes | 1 |
| | • With finished bore – With order codes for diameter and tolerance (article number without "-Z") | 9 |
| ØD2: | • Without finished bore – Without order codes | 1 |
| | • With finished bore – With order codes for diameter and tolerance (article number without "-Z") | 9 |

FLENDER Standard Couplings

Flexible Couplings – N-EUPEX and N-EUPEX DS Series

Type H

Size	Rated torque flexible type 80 ShoreA T_{KN} Nm	Speed n_{Kmax} rpm	Dimensions in mm														Mass moment of inertia		Article No. Order codes for bore diameters and tolerances are specified in catalog section 3	Weight m kg	
			Bore with keyway to DIN 6885		D1 min.	D2 max.	DA	ND1	ND2	NL1	NL2	S2	S	LZ	DZ	LG	J_1	J_2			
			D1 min.	D2 max.																	
200	1340	3400	-	85	-	85	200	140	140	80	90	6	140	118.5	144	310	0.04	0.095	2LC0101-0AG ■ ■ -0AB0	25.6	
													180	158.5	350	0.1				2LC0101-0AG ■ ■ -0AC0	26.5
													200	178.5	370	0.105				2LC0101-0AG ■ ■ -0AD0	27.2
													250	228.5	420	0.11				2LC0101-0AG ■ ■ -0AE0	28.5
225	2000	3000	-	90	-	90	225	150	150	90	100	6	140	118.5	169	330	0.07	0.158	2LC0101-1AG ■ ■ -0AB0	34	
													180	158.5	370	0.16				2LC0101-1AG ■ ■ -0AC0	35
													200	178.5	390	0.17				2LC0101-1AG ■ ■ -0AD0	36
													250	228.5	440	0.18				2LC0101-1AG ■ ■ -0AE0	38
250	2800	2750	46	100	46	100	250	165	165	100	110	8	180	152.5	185	390	0.12	0.27	2LC0101-2AG ■ ■ -0AC0	48	
													200	172.5	410	0.28				2LC0101-2AG ■ ■ -0AD0	50
													250	222.5	460	0.3				2LC0101-2AG ■ ■ -0AE0	52
280	3900	2450	49	110	51	110	280	180	180	110	120	8	250	222.5	215	480	0.20	0.52	2LC0101-3AG ■ ■ -0AE0	70	
315	5500	2150	49	100	51	120	315	165	200	125	140	8	250	222.5	250	515	0.32	0.87	2LC0101-4AG ■ ■ -0AE0	98	
			90	120	200	0.35	2LC0101-4AG ■ ■ -0AE0	100													
350	7700	2000	61	110	51	140	350	180	230	140	150	8	250	220.5	272	540	0.54	1.4	2LC0101-5AG ■ ■ -0AE0	120	
			90	140	230	0.61	2LC0101-5AG ■ ■ -0AE0	125													
400	10300	1700	66	120	51	150	400	200	250	160	180	8	250	185.5	310	590	1.0	2.9	2LC0101-6AG ■ ■ -0AE0	195	
			100	150	250	1.1	2LC0101-6AG ■ ■ -0AE0	200													
440	13500	1550	80	130	51	160	440	215	265	180	180	10	250	182	354	610	1.5	4.1	2LC0101-7AG ■ ■ -0AE0	225	
			120	160	265	1.7	2LC0101-7AG ■ ■ -0AE0	230													
ØD1: <ul style="list-style-type: none"> Without finished bore – Without order codes Without finished bore sizes 315 to 440 for 2nd diameter range D1 – Without order codes With finished bore – With order codes for diameter and tolerance (article number without "-Z") 																			1		
																			2		
																			9		
ØD2: <ul style="list-style-type: none"> Without finished bore – Without order codes Without finished bore sizes 315 to 440 for 2nd diameter range D2 – Without order codes With finished bore – With order codes for diameter and tolerance (article number without "-Z") 																			1		
																			2		
																			9		

During assembly, the gap dimension S2 must not exceed the permissible tolerance of +1 mm.

The hub diameter of the component part is assigned according to the diameter of the finished bore. Where bore diameters overlap, the component with the smaller hub diameter is always selected.

Weights and mass moments of inertia apply to maximum bore diameters.

Ordering example:

N-EUPEX H coupling, size 160, S = 200 mm,

Part 1: Bore D1 60H7 mm, keyway to DIN 6885-1 and set screw,

Part 2: Bore D2 55H7 mm, keyway to DIN 6885-1 and set screw.

Article No.:

2LC0100-7AG99-0AD0
L1E+M1D

The article number applies to standard flexibles of 80 ShoreA; the article number for alternative flexible types is available on request.