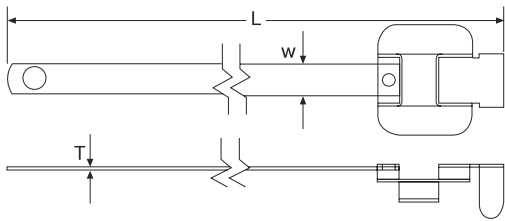


## Stainless Steel Tie - With Nylon coating



Material: Stainless Steel Coated with Black Nylon 11  
Thickness = .020" (0.5mm)

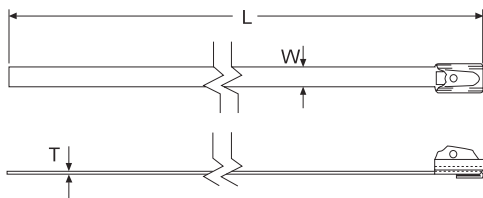


Part N°	Max Bundle Dia. mm	"L" Length mm	"W" Width mm	Min Loop Tens. Kg	
<b>STC-152S</b>	38	152	6.3	136	10
<b>STC-229S</b>	63	229	6.3	136	10
<b>STC-305S</b>	86	305	6.3	136	10
<b>STC-457S</b>	137	457	6.3	136	10
<b>STC-610S</b>	185	610	6.3	136	10

## Stainless Steel Tie - With Ball Lock



Material: Stainless Steel  
Thickness = .010" (0.3mm)



Part N°	Max Bundle Dia. mm	"L" Length mm	"W" Width mm	Min Loop Tens. Kg	
<b>STB-520S</b>	152	520	4.5	45.3	10
<b>STB-680S</b>	203	680	4.5	45.3	10
<b>STB-840S</b>	254	840	4.5	45.3	10
<b>STB-1050S</b>	318	1050	4.5	45.3	10
<b>STB-152M</b>	25	152	8.0	113.3	10
<b>STB-200M</b>	50	200	8.0	113.3	10
<b>STB-360M</b>	102	360	8.0	113.3	10
<b>STB-520M</b>	152	520	8.0	113.3	10
<b>STB-680M</b>	203	680	8.0	113.3	10
<b>STB-840M</b>	254	840	8.0	113.3	10
<b>STB-1050M</b>	318	1050	8.0	113.3	10

Part N°	Max Bundle Dia. mm	"L" Length mm	"W" Width mm	Min Loop Tens. Kg	
<b>STB-152S</b>	25	152	4.5	45.3	10
<b>STB-200S</b>	50	200	4.5	45.3	10
<b>STB-360S</b>	102	360	4.5	45.3	10

## Steel Tie Gun

Part N°: **STG-200**

For tensioning-cutting off ball lock and ladder type, of all widths.

: 1

