

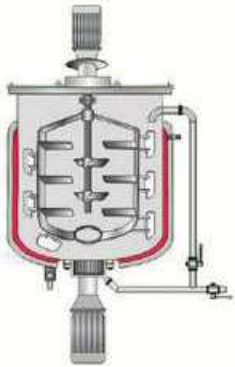
Fixed Vacuum Homogenizer



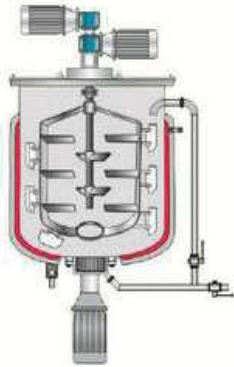
Technical parameters

Model	Capacity (L)	Agitator Power (Kw)	Agitator rotation speed	Homogenizer Power (Kw)	Homogenizer rotation speed
DMC-TF200	200L	2.2 Kw	0 ~ 65 rpm	4 Kw	3000 rpm
DMC-TF500	500L	4 Kw	0 ~ 65 rpm	11 Kw	3000 rpm
DMC-TF1000	1000L	4 Kw	0 ~ 65 rpm	11 Kw	3000 rpm
DMC-TF1500	1500L	5.5 Kw	0 ~ 65 rpm	11 Kw	3000 rpm
DMC-TF2000	2000L	7.5 Kw	0 ~ 65 rpm	11 Kw	3000 rpm
DMC-TF3000	3000L	7.5 Kw	0 ~ 65 rpm	15 Kw	3000 rpm
DMC-TF5000	5000L	11 Kw	0 ~ 65 rpm	22 Kw	3000 rpm

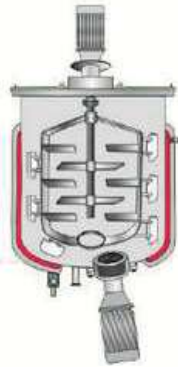
System Homogenizing Mixer



Single way mixing & external circulation



Double way mixing & external circulation

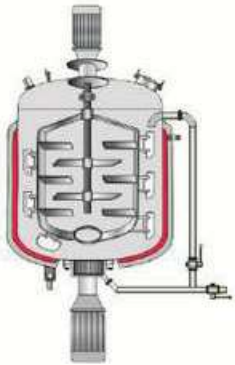


Single way mixing & internal circulation

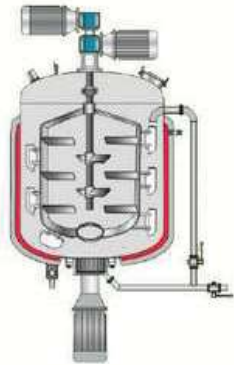


Double way mixing & internal circulation

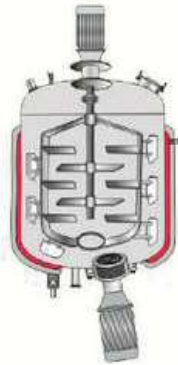
Vacuum Emulsifying Mixer



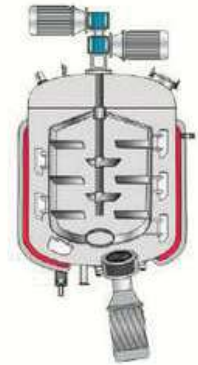
Single way mixing & external circulation



Double way mixing & external circulation



Single way mixing & internal circulation



Double way mixing & internal circulation

