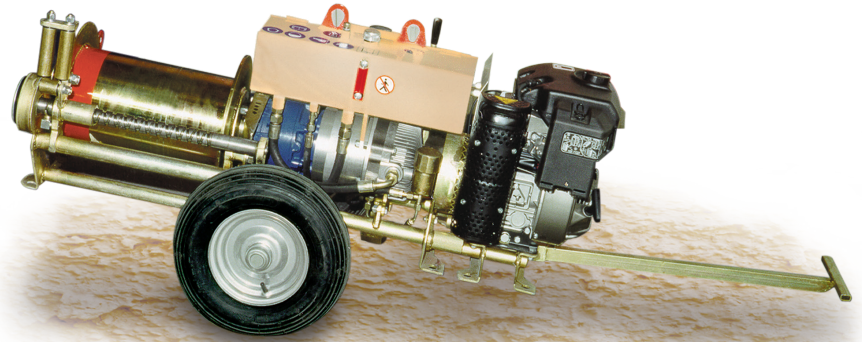


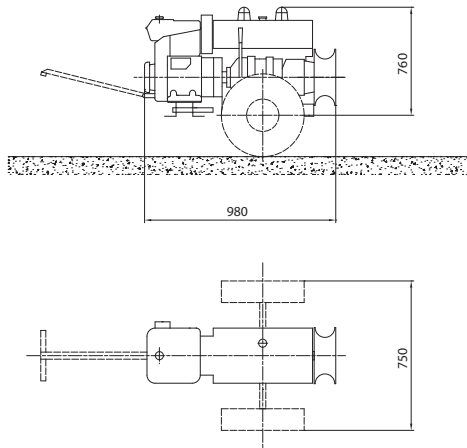
Hydraulic winch designed for tower erection, for stringing operations of low and medium voltage overhead lines and for any lifting work.

The winch is provided with a detachable capstan.

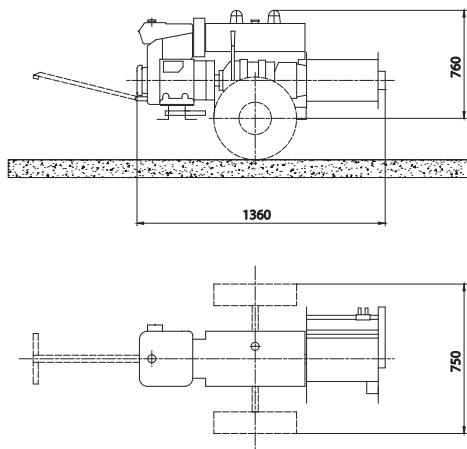


## AMB101 with ADT001 and ALL105

### AMB101



### AMB101 with ADT001



### Performance

Max pull	10 kN
Speed at max pull	1 km/h
Max speed	1.9 km/h

**Note:** the basic machine performance is calculated at 20°C and at sea level

### Characteristics

Diameter capstan	225 mm
Mass	100 kg
Mass with ADT001	130 kg

### Engine

Gasoline	5.1 kW (7 hp)
Cooling system	air
Starting system	by handle

### Hydraulic Transmission

Closed hydraulic circuit for stepless speed variation in both rotating directions.

### Configuration

Negative self-acting hydraulic brake

### Available Devices

**ALL102** Pulling rope locking device when capstan is used (compulsory for EC market)

**ALL105** Rigid axle and towing bar detachable, for manual towing

**ALL113** Handbarrow

### ADT001

Drum with automatic level wind suitable for correct winding of the rope on the drum.

External diameter	350 mm
Internal diameter	200 mm
Width	390 mm
Capacity 280 m	rope Ø 8 mm

Certified Quality System  
ISO 9001:2008

Keep you updated on: [www.tesmec.com](http://www.tesmec.com)

### Tesmec S.p.A.

Headquarters  
Via Zanica, 17/0 - 24050 Grassobbio (BG) - Italy  
Tel: +39.035.4232911 - Fax: +39.035.4522445

Manufacturing facilities  
Via Pertegalli, 2 - 24060 Endine Gaiano (BG) - Italy  
Tel: +39.035.825024 - Fax: +39.035.826375

Manufacturing facilities  
Via Don Brambilla, 26/28 - 23844 Sirone (LC) - Italy  
Tel: +39.031.858311 - Fax: +39.031.853562

1010