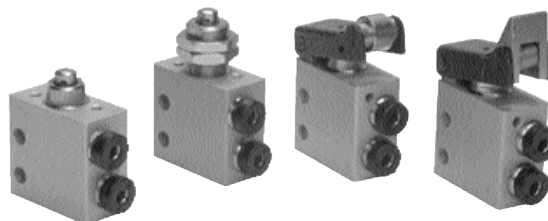


Microvannes

microvalves

Sopra
Pneumatic Advanced Systems

- Microvannes à poussoir NF et NO
NC and NO poppet microvalves
- Installation dans toutes les positions
Installation in any position
- Raccordement M5 ou raccords instantanés pour tube $\varnothing 4$
M5 threaded ports or push-in fittings for $\varnothing 4$ tube
- Faible effort d'actionnement
Low actuating force
- Version avec adaptateur (perçage $\varnothing 22$) pour montage en panneau
Version with adaptor for panel mounting (with $\varnothing 22$ hole)
- Versions spéciales sur demande
Special versions on request



Matériaux

Corps: aluminium anodisé

Ressort: INOX

Joints: NBR

Parties internes: laiton OT58

Materials

Body: aluminium 11S

Spring: stainless steel

Seals: NBR

Internal parts: brass OT58

Diamètre nominal <i>Nominal orifice</i>	2.5 mm
Débit nominal à 6 bar <i>Nominal flow rate at 6 bar</i>	100 NI/min
Température de travail <i>Temperature range</i>	max +60°C
Pression de travail <i>Working pressure</i>	2 ... 10 bar 0.2 ... 1 MPa
Force <i>Actuating force</i>	6 N
Fluide <i>Fluid</i>	Air filtré 50 μ avec ou sans lubrification <i>50μ filtered, lubricated or non lubricated air</i>

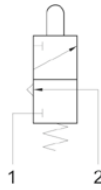
Microvannes

microvalves

Sopra
Pneumatic / Advanced Systems

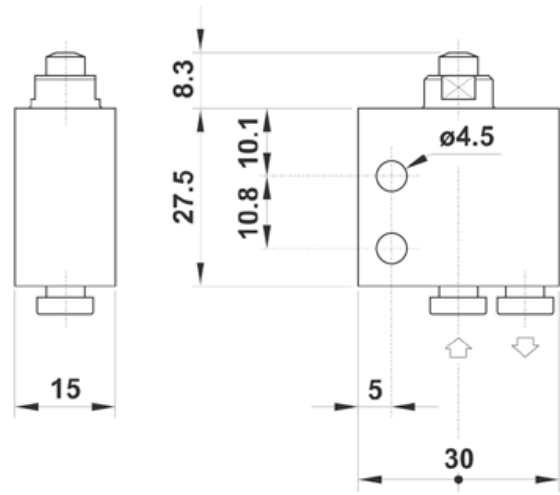
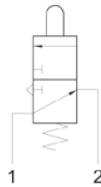
304 MA

Microvanne 3/2NF à poussoir, raccords instantanés pour tube Ø4 (raccordement arrière)
3/2 NC push-in fittings for Ø4 tube (ports on the bottom), tappet



314 MA

Microvanne 3/2NO à poussoir, raccords instantanés pour tube Ø4 (raccordement arrière)
3/2 NO push-in fittings for Ø4 tube (ports on the bottom), tappet

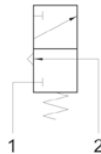


204 MA

Microvanne 2/2NF à poussoir, raccords instantanés pour tube Ø4 (raccordement arrière)
2/2 NC push-in fittings for Ø4 tube (ports on the bottom), tappet

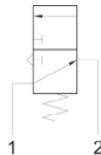
304 MB

Microvanne 3/2NF montage en panneau pour boutons de commande, raccords instantanés pour tube Ø4 (raccordement arrière)
3/2 NC push-in fittings for Ø4 tube (ports on the bottom), actuator adaptor for panel mounting



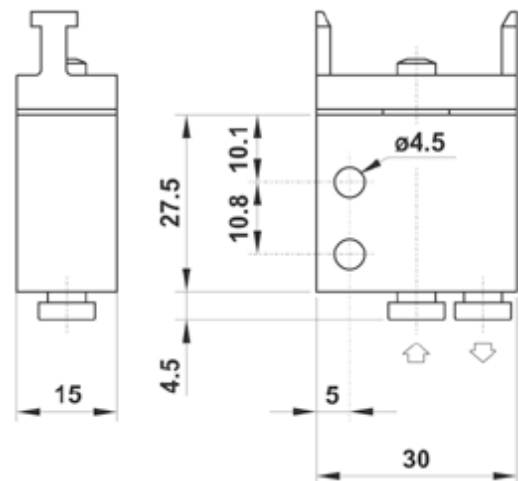
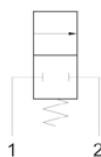
314 MB

Microvanne 3/2NO montage en panneau pour boutons de commande, raccords instantanés pour tube Ø4 (raccordement arrière)
3/2 NO push-in fittings for Ø4 tube (ports on the bottom), actuator adaptor for panel mounting



204 MB

Microvanne 2/2NF montage en panneau pour boutons de commande, raccords instantanés pour tube Ø4 (raccordement arrière)
2/2 NC push-in fittings for Ø4 tube (ports on the bottom), actuator adaptor for panel mounting

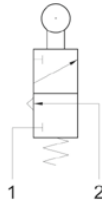


Microvannes

microvalves

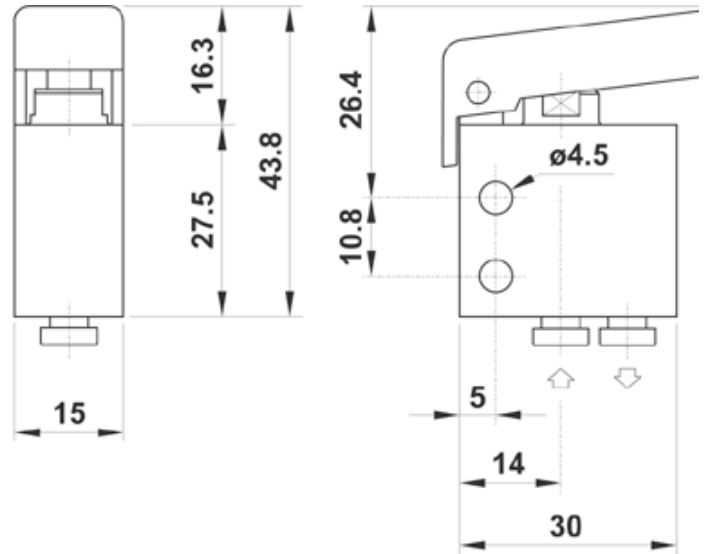
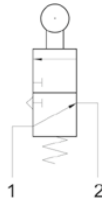
304 MR

Mirovane 3/2NF à galet, raccords instantanés pour tube Ø4 (raccordement arrière)
3/2 NC push-in fittings for Ø4 tube (ports on the bottom), roller lever



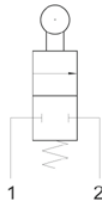
314 MR

Microvane 3/2NO à galet, raccords instantanés pour tube Ø4 (raccordement arrière)
3/2 NO push-in fittings for Ø4 tube (ports on the bottom), roller lever



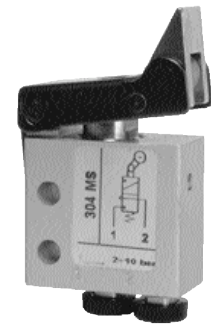
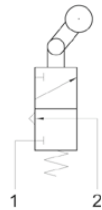
204 MR

Microvane 2/2NF à galet, raccords instantanés pour tube Ø4 (raccordement arrière)
2/2 NC push-in fittings for Ø4 tube (ports on the bottom), roller lever



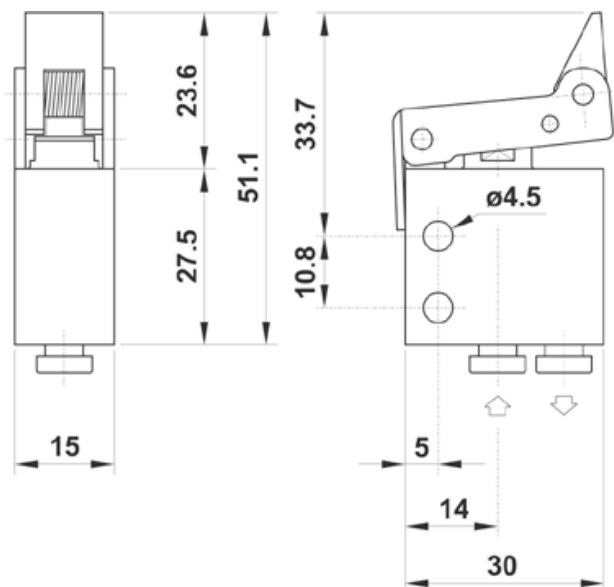
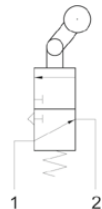
304 MS

Microvane 3/2NF à galet unidirectionnel, raccords instantanés pour tube Ø4 (raccordement arrière)
3/2 NC push-in fittings for Ø4 tube (ports on the bottom), uni-directional lever



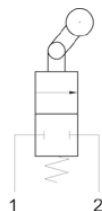
314 MS

Microvane 3/2NO à galet unidirectionnel, raccords instantanés pour tube Ø4 (raccordement arrière)
3/2 NO push-in fittings for Ø4 tube (ports on the bottom), uni-directional lever



204 MS

Microvane 2/2NF à galet unidirectionnel, raccords instantanés pour tube Ø4 (raccordement arrière)
2/2 NC push-in fittings for Ø4 tube (ports on the bottom), uni-directional lever



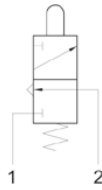
Microvannes

microvalves

304 MV

Microvanne 3/2NF à poussoir (traversée de cloison), raccords instantanés pour tube Ø4 (raccordement arrière)

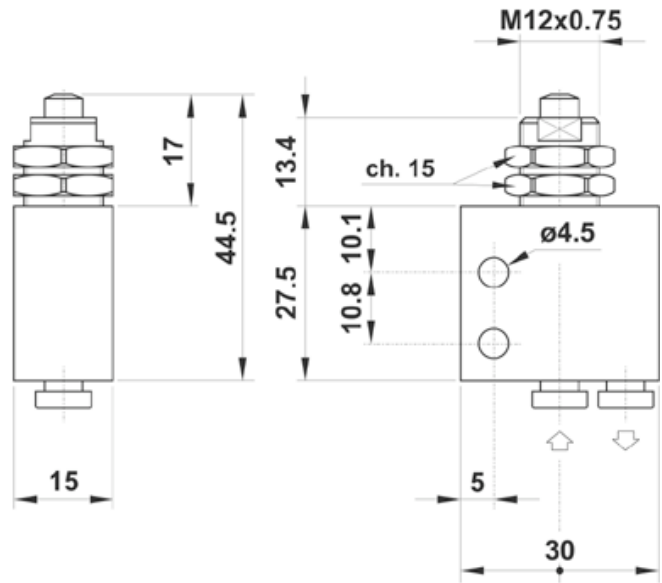
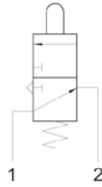
3/2 NC push-in fittings for Ø4 tube (ports on the bottom), panel mount tappet



314 MV

Microvanne 3/2NO à poussoir (traversée de cloison), raccords instantanés pour tube Ø4 (raccordement arrière)

3/2 NO push-in fittings for Ø4 tube (ports on the bottom), panel mount tappet



204 MV

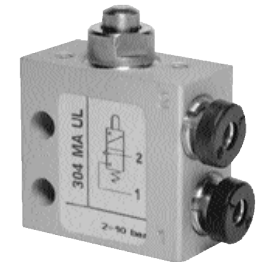
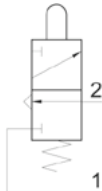
Microvanne 2/2NF à poussoir (traversée de cloison), raccords instantanés pour tube Ø4 (raccordement arrière)

2/2 NC push-in fittings for Ø4 tube (ports on the bottom), panel mount tappet

304 MA UL

Microvanne 3/2NF à poussoir, raccords instantanés pour tube Ø4 (raccordement latéral)

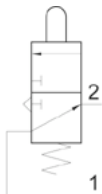
3/2 NC push-in fittings for Ø4 tube (ports on the side), tappet



314 MA UL

Microvanne 3/2NO à poussoir, raccords instantanés pour tube Ø4 (raccordement latéral)

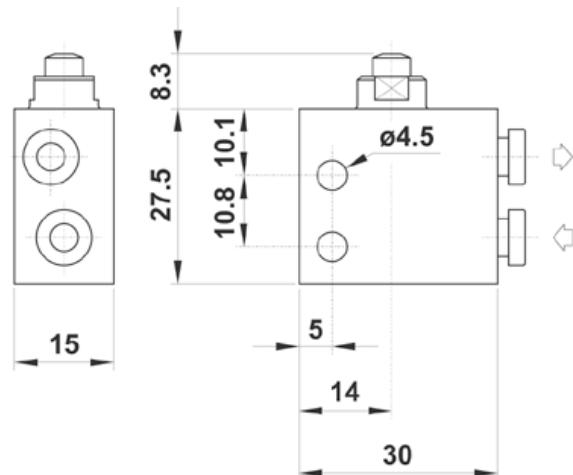
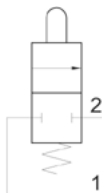
3/2 NO push-in fittings for Ø4 tube (ports on the side), tappet



204 MA UL

Microvanne 2/2NF à poussoir, raccords instantanés pour tube Ø4 (raccordement latéral)

2/2 NC push-in fittings for Ø4 tube (ports on the side), tappet



Microvannes

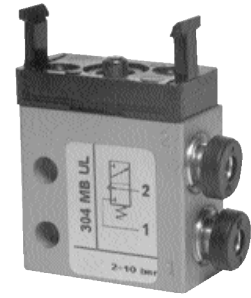
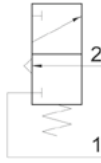
microvalves

Sopra
Pneumatic Advanced Systems

304 MB UL

Microvanne 3/2NF montage en panneau pour boutons de commande, raccords instantanés pour tube Ø4 (raccordement latéral)

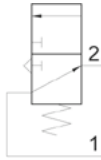
3/2 NC push-in fittings for Ø4 tube (ports on the side), actuator adaptor for panel mounting



314 MB UL

Microvanne 3/2NO montage en panneau pour boutons de commande, raccords instantanés pour tube Ø4 (raccordement latéral)

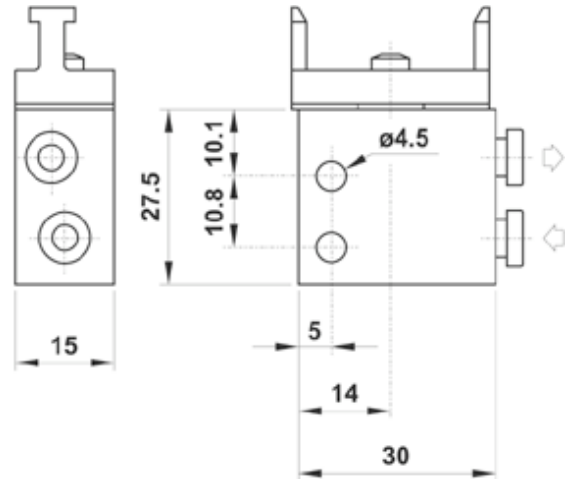
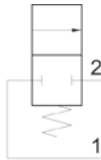
3/2 NO push-in fittings for Ø4 tube (ports on the side), actuator adaptor for panel mounting



204 MB UL

Microvanne 2/2NF montage en panneau pour boutons de commande, raccords instantanés pour tube Ø4 (raccordement latéral)

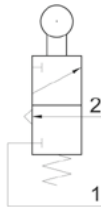
2/2 NC push-in fittings for Ø4 tube (ports on the side), actuator adaptor for panel mounting



304 MR UL

Microvanne 3/2NF à galet, raccords instantanés pour tube Ø4 (raccordement latéral)

3/2 NC push-in fittings for Ø4 tube (ports on the side), roller lever



314 MR UL

Microvanne 3/2NO à galet, raccords instantanés pour tube Ø4 (raccordement latéral)

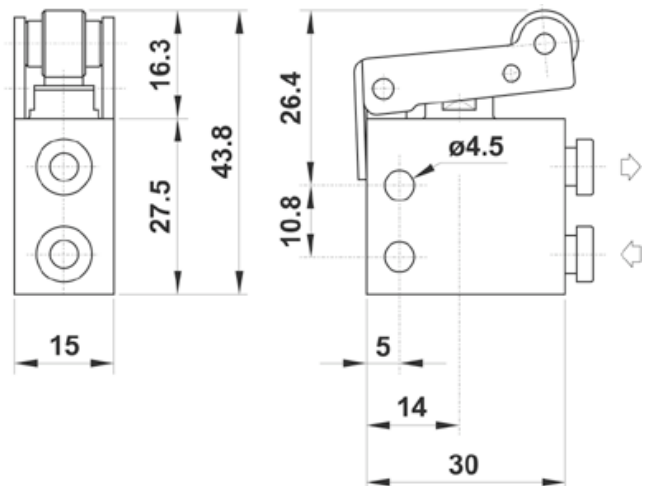
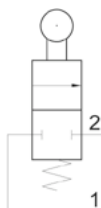
3/2 NO push-in fittings for Ø4 tube (ports on the side), roller lever



204 MR UL

Microvanne 2/2NF à galet, raccords instantanés pour tube Ø4 (raccordement latéral)

2/2 NC push-in fittings for Ø4 tube (ports on the side), roller lever

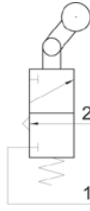


Microvannes

microvalves

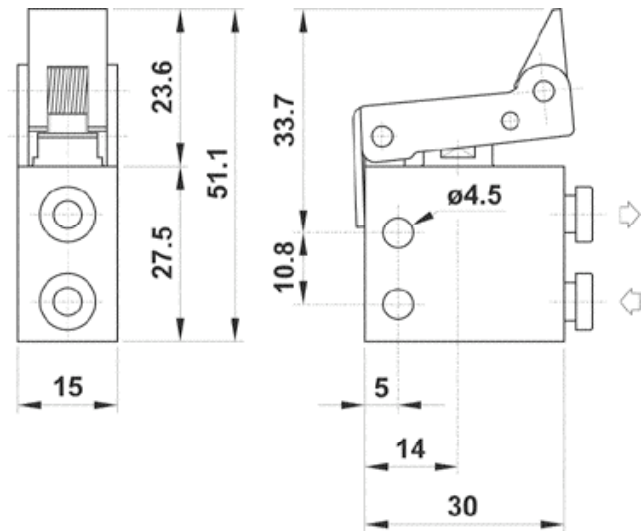
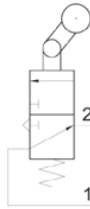
304 MS UL

Microvanne 3/2NF à galet unidirectionnel, raccords instantanés pour tube Ø4 (raccordement latéral)
3/2 NC push-in fittings for Ø4 tube (ports on the side), uni-directional lever



314 MS UL

Microvanne 3/2NO à galet unidirectionnel, raccords instantanés pour tube Ø4 (raccordement latéral)
3/2 NO push-in fittings for Ø4 tube (ports on the side), uni-directional lever



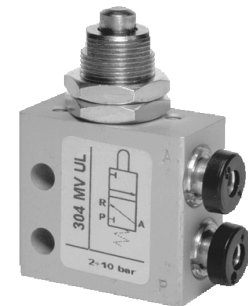
204 MS UL

Microvanne 2/2NF à galet unidirectionnel, raccords instantanés pour tube Ø4 (raccordement latéral)
2/2 NC push-in fittings for Ø4 tube (ports on the side), uni-directional lever



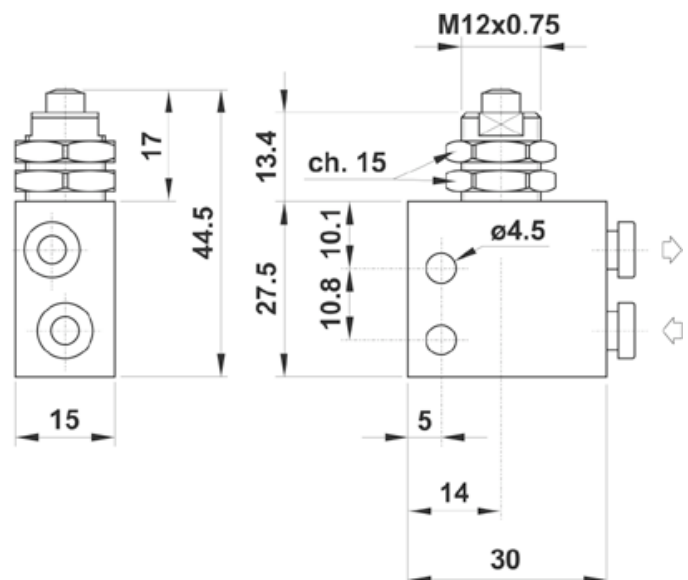
304 MV UL

Microvanne 3/2NF à poussoir (traversée de cloison), raccords instantanés pour tube Ø4 (raccordement latéral)
3/2 NC push-in fittings for Ø4 tube (ports on the side), panel mount tappet



314 MV UL

Microvanne 3/2NO à poussoir (traversée de cloison), raccords instantanés pour tube Ø4 (raccordement latéral)
3/2 NO push-in fittings for Ø4 tube (ports on the side), panel mount tappet



204 MV UL

Microvanne 2/2NF à poussoir (traversée de cloison), raccords instantanés pour tube Ø4 (raccordement latéral)
2/2 NC push-in fittings for Ø4 tube (ports on the side), panel mount tappet



Microvannes

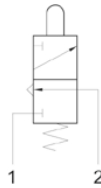
microvalves

Sopra
Pneumatic / Advanced Systems

305 MA

Microvanne 3/2NF à poussoir, raccordement M5
(raccordement arrière)

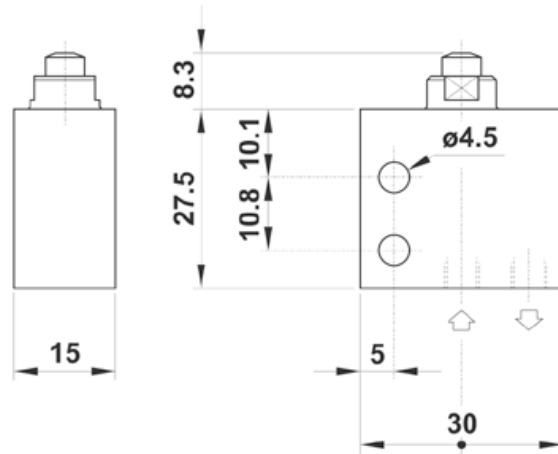
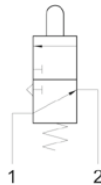
3/2 NC M5 threaded ports (on the bottom), tappet



315 MA

Microvanne 3/2NO à poussoir, raccordement M5
(raccordement arrière)

3/2 NO M5 threaded ports (on the bottom), tappet



205 MA

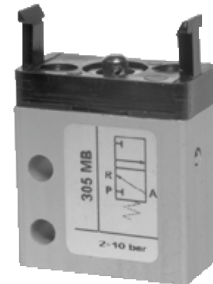
Microvanne 2/2NF à poussoir, raccordement M5
(raccordement arrière)

2/2 NC M5 threaded ports (on the bottom), tappet

305 MB

Microvanne 3/2NF montage en panneau pour
boutons de commande, raccordement M5
(raccordement arrière)

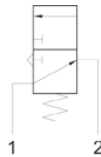
3/2 NC M5 threaded ports (on the bottom), actuator
adaptor for panel mounting



315 MB

Microvanne 3/2NO montage en panneau pour
boutons de commande, raccordement M5
(raccordement arrière)

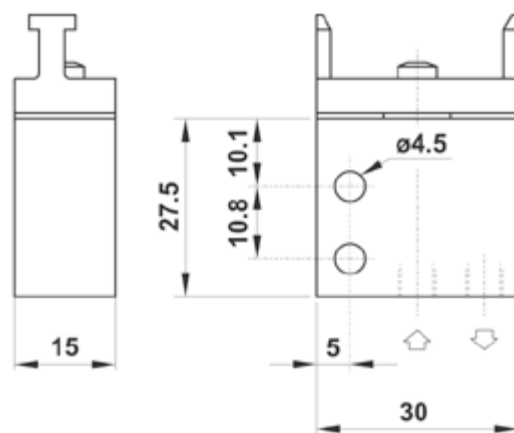
3/2 NO M5 threaded ports (on the bottom), actuator
adaptor for panel mounting



205 MB

Microvanne 2/2NF montage en panneau pour
boutons de commande, raccordement M5
(raccordement arrière)

2/2 NC M5 threaded ports (on the bottom), actuator
adaptor for panel mounting

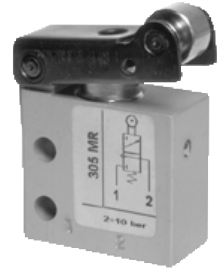
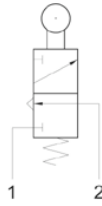


Microvannes

microvalves

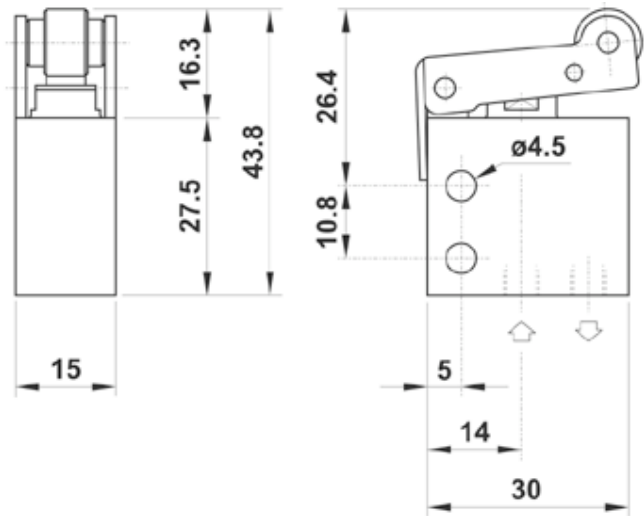
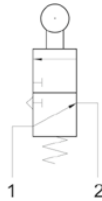
305 MR

Microvanne 3/2NF à galet, raccordement M5 (raccordement arrière)
3/2 NC M5 threaded ports (on the bottom), roller lever



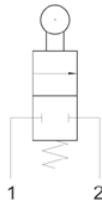
315 MR

Microvanne 3/2NO à galet, raccordement M5 (raccordement arrière)
3/2 NO M5 threaded ports (on the bottom), roller lever



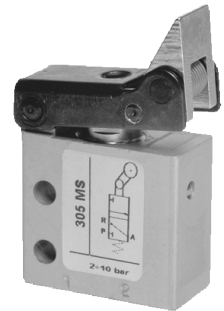
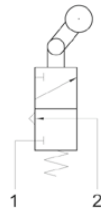
205 MR

Microvanne 2/2NF à galet, raccordement M5 (raccordement arrière)
2/2 NC M5 threaded ports (on the bottom), roller lever



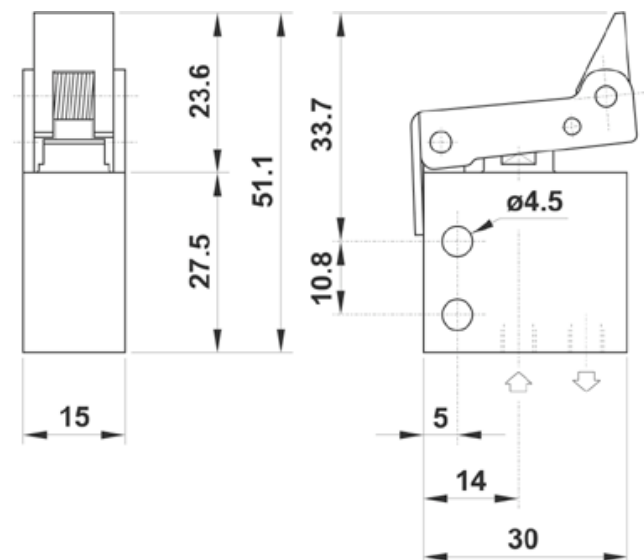
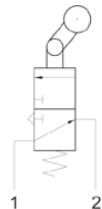
305 MS

Microvanne 3/2NF à galet unidirectionnel, raccordement M5 (raccordement arrière)
3/2 NC M5 threaded ports (on the bottom), uni-directional lever



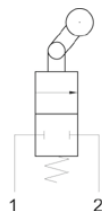
315 MS

Microvanne 3/2NO à galet unidirectionnel, raccordement M5 (raccordement arrière)
3/2 NO M5 threaded ports (on the bottom), uni-directional lever



205 MS

Microvanne 2/2NF à galet unidirectionnel, raccordement M5 (raccordement arrière)
2/2 NC M5 threaded ports (on the bottom), uni-directional lever



Microvannes

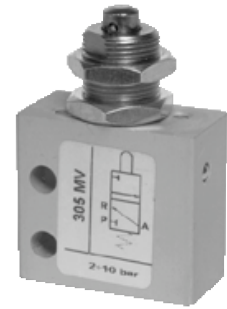
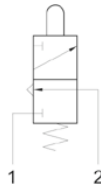
microvalves

Sopra
Pneumatic Advanced Systems

305 MV

Microvanne 3/2NF à poussoir (traversée de cloison), raccordement M5 (raccordement arrière)

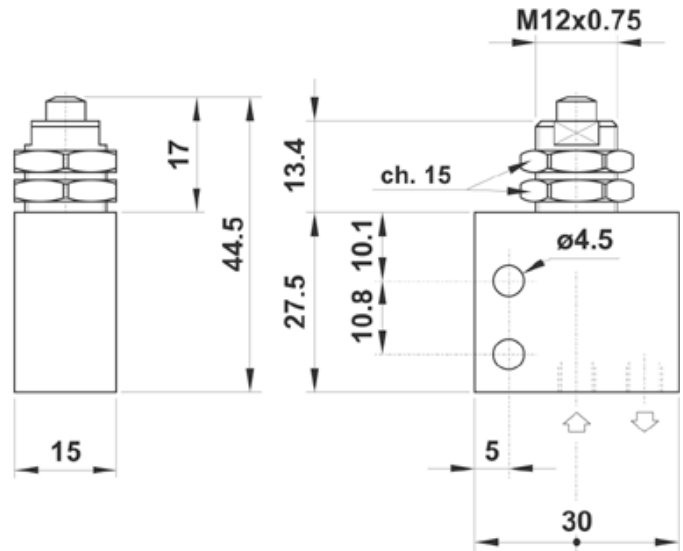
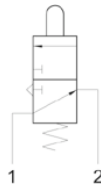
3/2 NC M5 threaded ports (on the bottom), panel mount tappet



315 MV

Microvanne 3/2NO à poussoir (traversée de cloison), raccordement M5 (raccordement arrière)

3/2 NO M5 threaded ports (on the bottom), panel mount tappet



205 MV

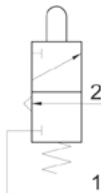
Microvanne 2/2NF à poussoir (traversée de cloison), raccordement M5 (raccordement arrière)

2/2 NC M5 threaded ports (on the bottom), panel mount tappet

305 MA UL

Microvanne 3/2NF à poussoir, raccordement M5 (raccordement latéral)

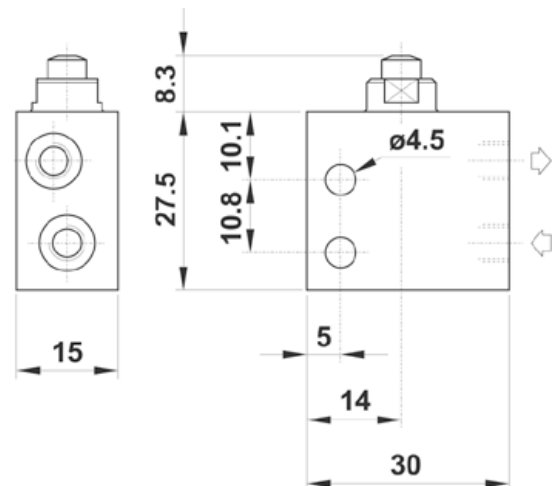
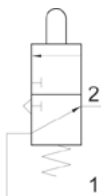
3/2 NC M5 threaded ports (on the side), tappet



315 MA UL

Microvanne 3/2NO à poussoir, raccordement M5 (raccordement latéral)

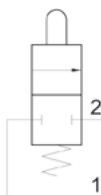
3/2 NO M5 threaded ports (on the side), tappet



205 MA UL

Microvanne 2/2NF à poussoir, raccordement M5 (raccordement latéral)

2/2 NC M5 threaded ports (on the side), tappet



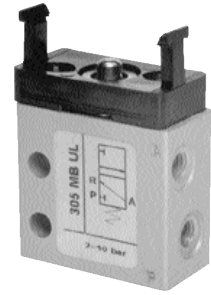
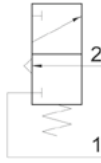
Microvannes

microvalves

305 MB UL

Microvanne 3/2NF montage en panneau pour boutons de commande, raccordement M5 (raccordement latéral)

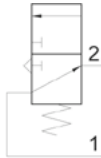
3/2 NC M5 threaded ports (on the side), actuator adaptor for panel mounting



315 MB UL

Microvanne 3/2NO montage en panneau pour boutons de commande, raccordement M5 (raccordement latéral)

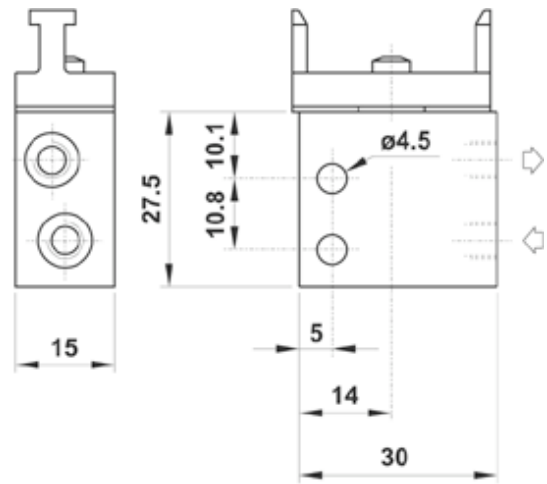
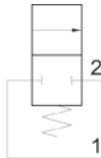
3/2 NO M5 threaded ports (on the side), actuator adaptor for panel mounting



205 MB UL

Microvanne 2/2NF montage en panneaux pour boutons de commande, raccordement M5 (raccordement latéral)

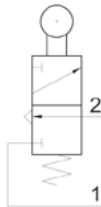
2/2 NC M5 threaded ports (on the side), actuator adaptor for panel mounting



305 MR UL

Microvanne 3/2NF à galet, raccordement M5 (raccordement latéral)

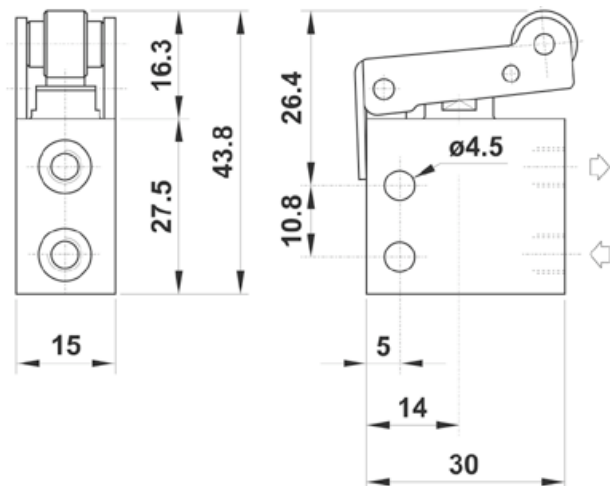
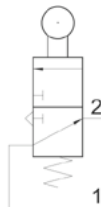
3/2 NC M5 threaded ports (on the side), roller lever



315 MR UL

Microvanne 3/2NO à galet, raccordement M5 (raccordement latéral)

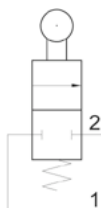
3/2 NO M5 threaded ports (on the side), roller lever



205 MR UL

Microvanne 2/2NF à galet, raccordement M5 (raccordement latéral)

2/2 NC M5 threaded ports (on the side), roller lever



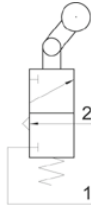
Microvannes

microvalves

Sopra
Pneumatic Advanced Systems

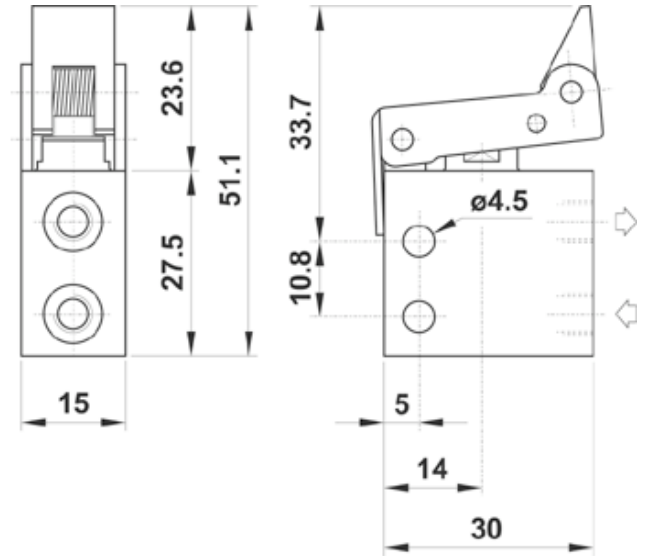
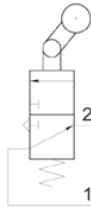
305 MS UL

Microvanne 3/2NF à galet unidirectionnel, raccordement M5 (raccordement latéral)
3/2 NC M5 threaded ports (on the side), uni-directional lever



315 MS UL

Microvanne 3/2NO à galet unidirectionnel, raccordement M5 (raccordement latéral)
3/2 NO M5 threaded ports (on the side), uni-directional lever



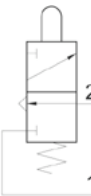
205 MS UL

Microvanne 2/2NF à galet unidirectionnel, raccordement M5 (raccordement latéral)
2/2 NC M5 threaded ports (on the side), uni-directional lever



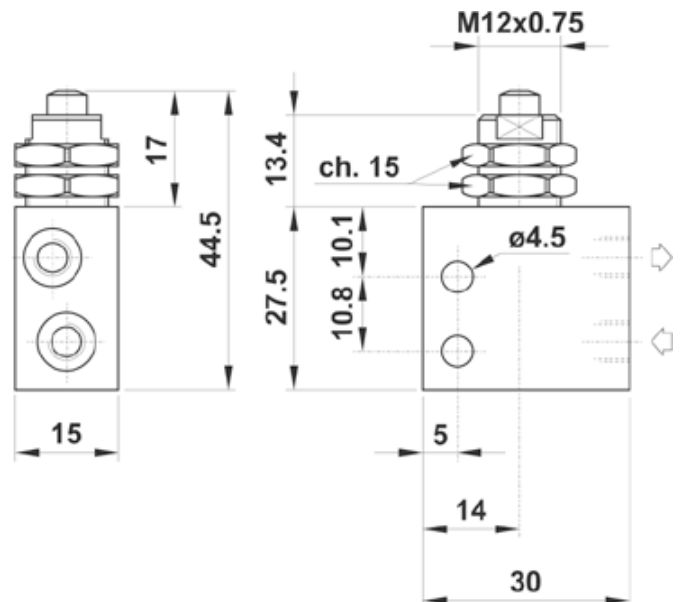
305 MV UL

Microvanne 3/2NF à poussoir (traversée de cloison), raccordement M5 (raccordement latéral)
3/2 NC M5 threaded ports (on the side), panel mount tappet



315 MV UL

Microvanne 3/2NO à poussoir (traversée de cloison), raccordement M5 (raccordement latéral)
3/2 NO M5 threaded ports (on the side), panel mount tappet



205 MV UL

Microvanne 2/2NF à poussoir (traversée de cloison), raccordement M5 (raccordement latéral)
2/2 NC M5 threaded ports (on the side), panel mount tappet



Microvannes

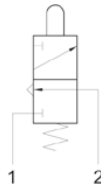
microvalves

Sopra
Pneumatic Advanced Systems

304 MGx

Microvanne 3/2NF à levier, raccords instantanés pour tube Ø4 (raccordement arrière) (4 couleurs; voir explication ci-contre)

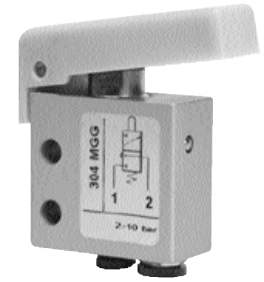
3/2 NC push-in fittings for Ø4 tube (ports on the bottom), push button (4 colours - see explanation)



Afin d'obtenir la référence de votre produit, remplacez la lettre x par la lettre correspondant à sa codification couleur.

In the part number replace the letter "x" with the colour reference of the push button.

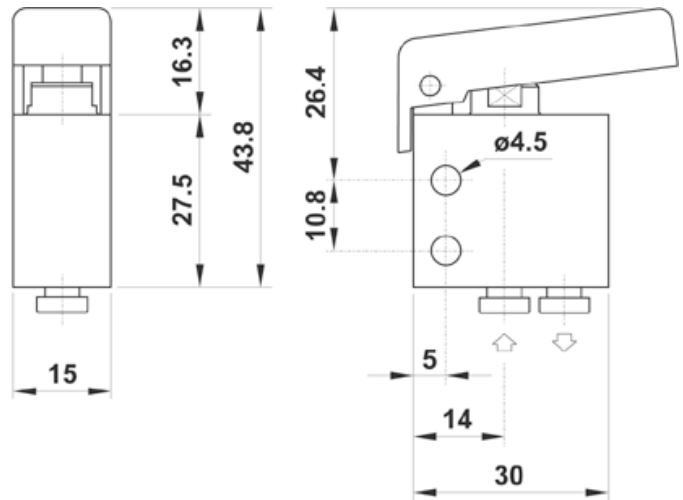
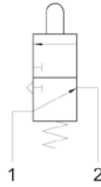
ROUGE - red	R
JAUNE - yellow	G
VERT - green	V
NOIR - black	N



314 MGx

Microvanne 3/2NO à levier, raccords instantanés pour tube Ø4 (raccordement arrière)(4 couleurs; voir explication ci-contre)

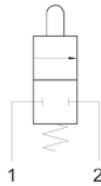
3/2 NO push-in fittings for Ø4 tube (ports on the bottom), push button (4 colours - see explanation)



204 MGx

Microvanne 2/2NF à levier, raccords instantanés pour tube Ø4 (raccordement arrière) (4 couleurs; voir explication ci-contre)

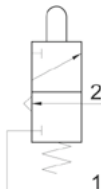
2/2 NC push-in fittings for Ø4 tube (ports on the bottom), push button (4 colours - see explanation)



304 MGx UL

Microvanne 3/2NF à levier, raccords instantanés pour tube Ø4 (raccordement latéral) (4 couleurs; voir explication ci-contre)

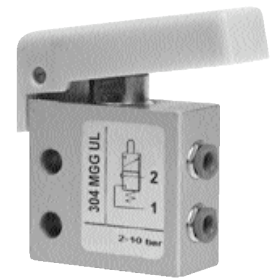
3/2 NC push-in fittings for Ø4 tube (ports on the side), push button (4 colours - see explanation)



Afin d'obtenir la référence de votre produit, remplacez la lettre x par la lettre correspondant à sa codification couleur.

In the part number replace the letter "x" with the colour reference of the push button.

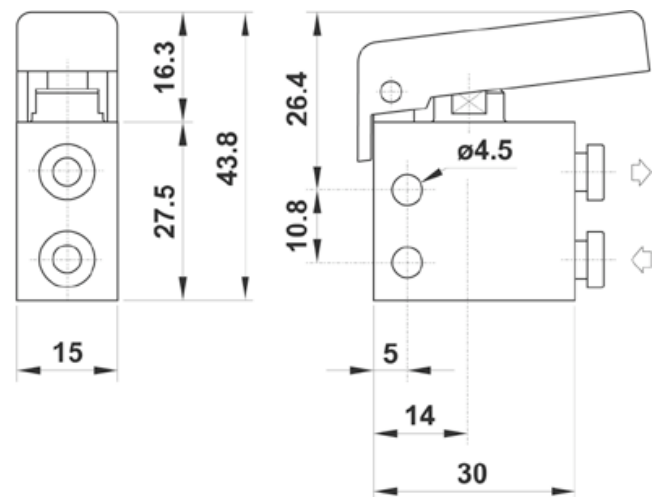
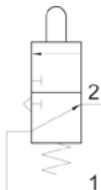
ROUGE - red	R
JAUNE - yellow	G
VERT - green	V
NOIR - black	N



314 MGx UL

Microvanne 3/2NO à levier, raccords instantanés pour tube Ø4 (raccordement latéral) (4 couleurs; voir explication ci-contre)

3/2 NO push-in fittings for Ø4 tube (ports on the side), push button (4 colours - see explanation)



204 MGx UL

Microvanne 2/2NF à levier, raccords instantanés pour tube Ø4 (raccordement latéral) (4 couleurs; voir explication ci-contre)

2/2 NC push-in fittings for Ø4 tube (ports on the side), push button (4 colours - see explanation)



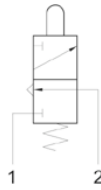
Microvannes

microvalves

Sopra
Pneumatic Advanced Systems

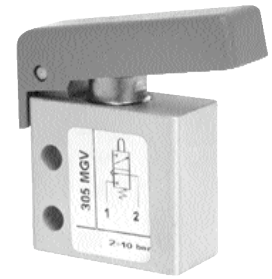
305 MGx

Microvanne 3/2NF à levier, raccordement M5 (raccordement arrière)
3/2 NC M5 threaded ports (on the bottom),
push button (4 colours - see explanation)



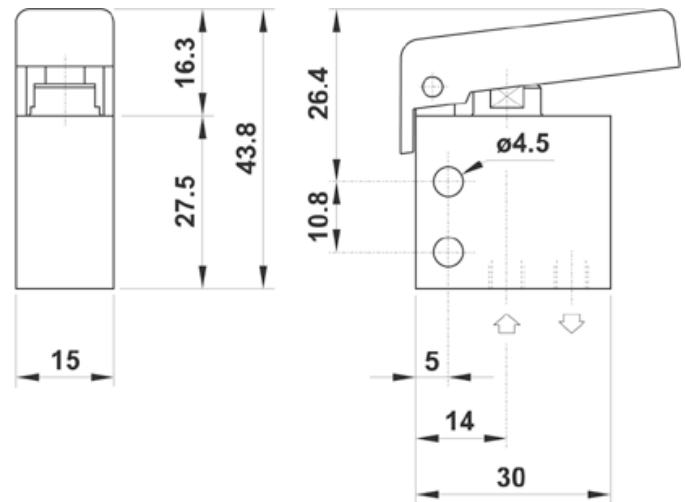
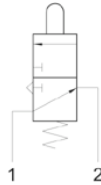
Afin d'obtenir la référence de votre produit, remplacez la lettre x par la lettre correspondant à sa codification couleur.
In the part number replace the letter "x" with the colour reference of the push button.

ROUGE - red	R
JAUNE - yellow	G
VERT - green	V
NOIR - black	N



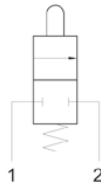
315 MGx

Microvanne 3/2NO à levier, raccordement M5 (raccordement arrière)
3/2 NO M5 threaded ports (on the bottom),
push button (4 colours - see explanation)



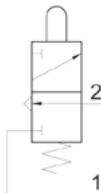
205 MGx

Microvanne 2/2NF à levier, raccordement M5 (raccordement arrière)
2/2 NC M5 threaded ports (on the bottom),
push button (4 colours - see explanation)



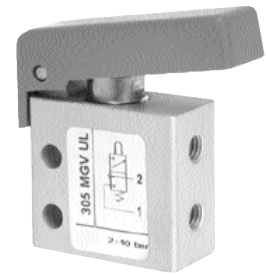
305 MGx UL

Microvanne 3/2NF à levier, raccordement M5 (raccordement latéral)
3/2 NC M5 threaded ports (on the side),
push button (4 colours - see explanation)



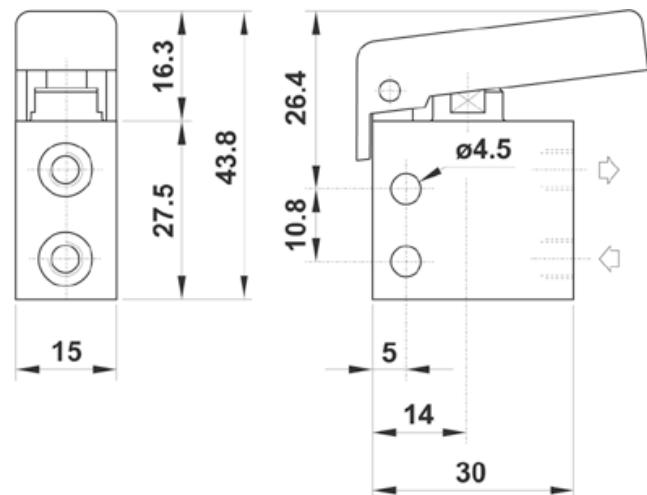
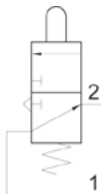
Afin d'obtenir la référence de votre produit, remplacez la lettre x par la lettre correspondant à sa codification couleur.
In the part number replace the letter "x" with the colour reference of the push button.

ROUGE - red	R
JAUNE - yellow	G
VERT - green	V
NOIR - black	N



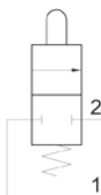
315 MGx UL

Microvanne 3/2NO à levier, raccordement M5 (raccordement latéral)
3/2 NO M5 threaded ports (on the side),
push button (4 colours - see explanation)



205 MGx UL

Microvanne 2/2NF à levier, raccordement M5 (raccordement latéral)
2/2 NC M5 threaded ports (on the side),
push button (4 colours - see explanation)

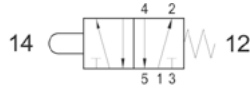


Microvannes

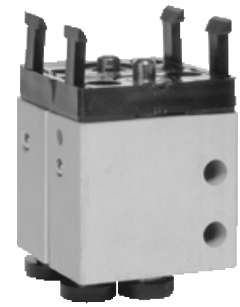
microvalves

Sopra
Pneumatic Advanced Systems

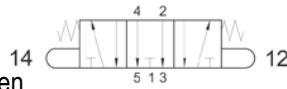
504 MB



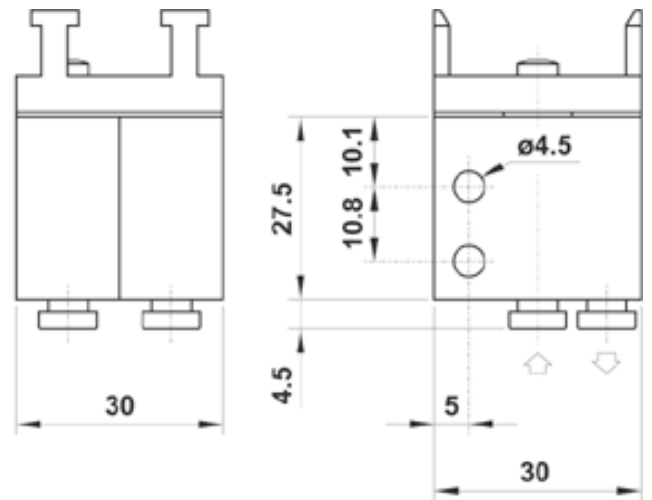
Microvanne 5/2 monostable montage en panneau pour boutons de commande, raccords instantanés pour tube Ø4 (raccordement arrière)
5/2 push-in fittings for Ø4 tube (ports on the bottom), actuator adaptor for panel mounting



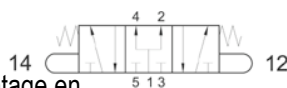
2.304 MB



Microvanne 5/3 centre ouvert montage en panneau pour boutons de commande, raccords instantanés pour tube Ø4 (raccordement arrière)
5/3 open centres, push-in fittings for Ø4 tube (ports on the bottom), actuator adaptor for panel mounting

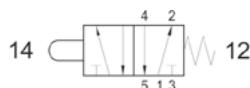


2.314 MB



Microvanne 5/3 centre en pression montage en panneau pour boutons de commande, raccords instantanés pour tube Ø4 (raccordement arrière)
5/3 pressurized centres, push-in fittings for Ø4 tube (ports on the bottom), actuator adaptor for panel mounting

505 MB

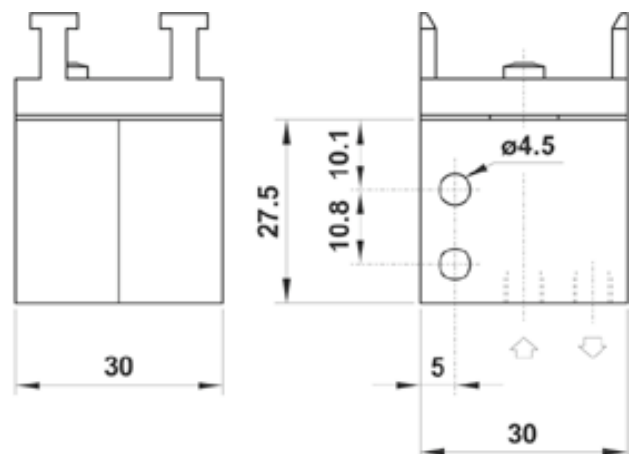


Microvanne 5/2 monostable montage en panneau pour boutons de commande, raccordement M5 (raccordement arrière)
5/2 M5 threaded ports (on the bottom), actuator adaptor for panel mounting

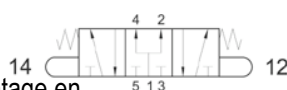
2.305 MB



Microvanne 5/3 centre ouvert montage en panneau pour boutons de commande, raccordement M5 (raccordement arrière)
5/3 open centres, M5 threaded ports (on the bottom), actuator adaptor for panel mounting



2.315 MB



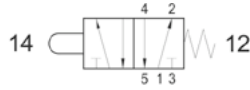
Microvanne 5/3 centre en pression montage en panneau pour boutons de commande, raccordement M5 (raccordement arrière)
5/3 pressurized centres, M5 threaded ports (on the bottom), actuator adaptor for panel mounting

Microvannes

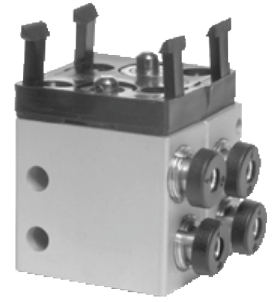
microvalves

Sopra
Pneumatic Advanced Systems

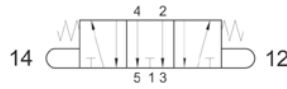
504 MB UL



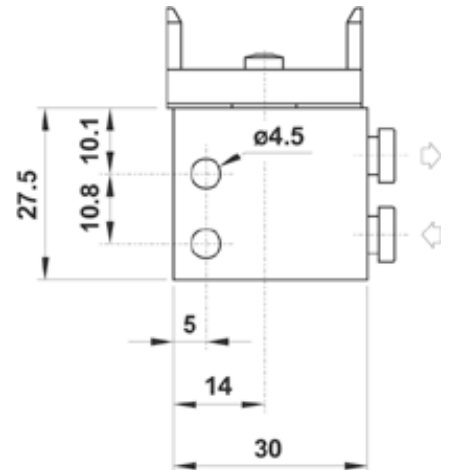
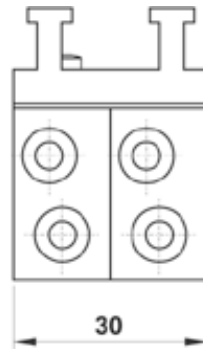
Microvanne 5/2 monostable montage en panneau pour boutons de commande, raccords instantanés pour tube Ø4 (raccordement latéral)
5/2 push-in fittings for ø4 tube (ports on the side), actuator adaptor for panel mounting



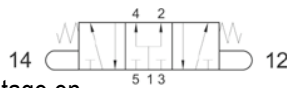
2.304 MB UL



Microvanne 5/3 centre ouvert montage en panneau pour boutons de commande, raccords instantanés pour tube Ø4 (raccordement latéral)
5/3 open centres, push-in fittings for ø4 tube (ports on the side), actuator adaptor for panel mounting

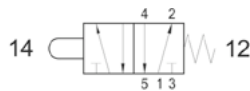


2.314 MB UL



Microvanne 5/3 centre en pression montage en panneau pour boutons de commande, raccords instantanés pour tube Ø4 (raccordement latéral)
5/3 pressurized centres, push-in fittings for ø4 tube (ports on the side), actuator adaptor for panel mounting

505 MB UL

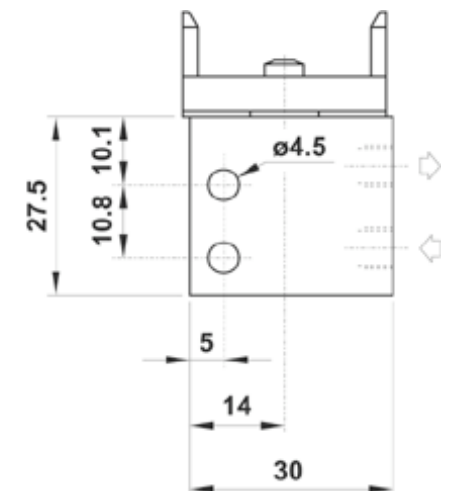
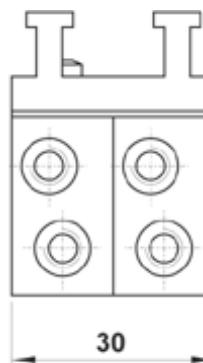


Microvanne 5/2 monostable montage en panneau pour boutons de commande, raccordement M5 (raccordement latéral)
5/2 M5 threaded ports (on the side), actuator adaptor for panel mounting

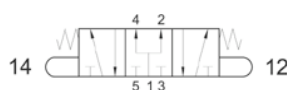
2.305 MB UL



Microvanne 5/3 centre ouvert montage en panneau pour boutons de commande, raccordement M5 (raccordement latéral)
5/3 open centres, M5 threaded ports (on the side), actuator adaptor for panel mounting



2.315 MB UL



Microvanne 5/3 centre en pression montage en panneau pour boutons de commande, raccordement M5 (raccordement latéral)
5/3 pressurized centres, M5 threaded ports (on the side), actuator adaptor for panel mounting

Microvannes

microvalves

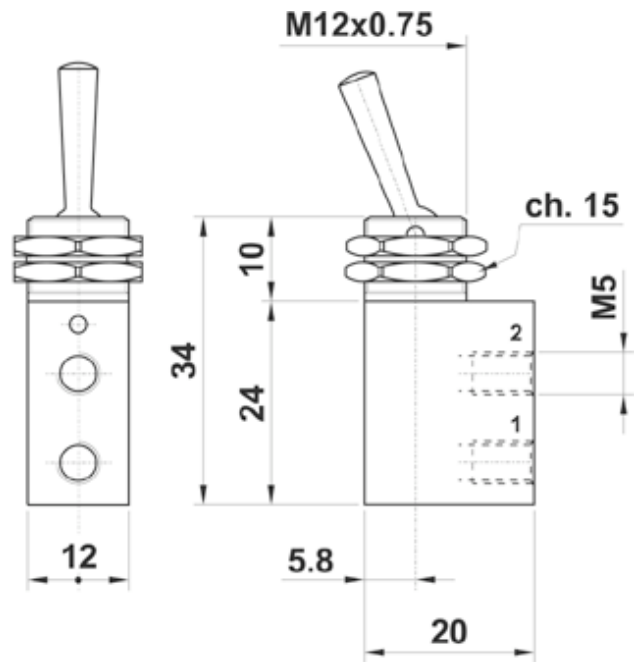
305 LL

Microvanne 3/2NF à levier bistable, raccordement M5

matériau du corps: laiton nickelé

3/2 NC M5 threaded ports, bi-stable lever

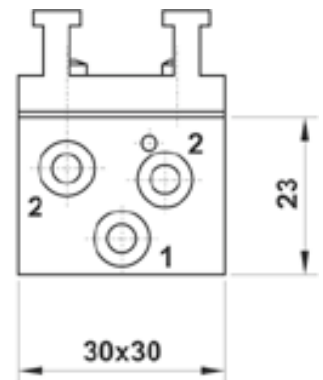
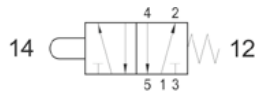
body material: nickel plated brass



504 MB CU

Microvanne 5/2 monostable montage en panneau pour boutons de commande, corps monobloc, raccords instantanés pour tube Ø4 (raccordement latéral)

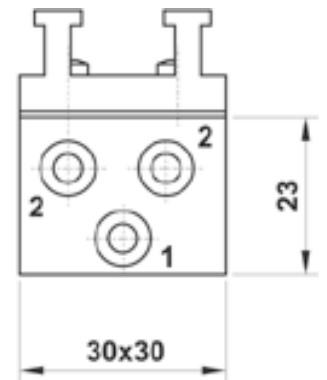
5/2 single valve body, push-in fittings for Ø4 tube (ports on the side), actuator adaptor for panel mounting



2.304 MB CU

Microvanne 5/3 centre ouvert montage en panneau pour boutons de commande, corps monobloc, raccords instantanés pour tube Ø4 (raccordement latéral)

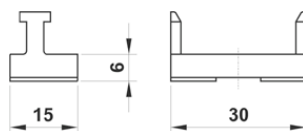
5/3 open centres, single valve body, push-in fittings for Ø4 tube (ports on the side), actuator adaptor for panel mounting



08.017.2

Adaptateur simple pour boutons de commande montage en panneau (avec vis de fixation)

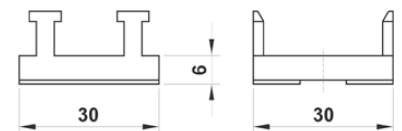
single adaptor for panel mounting actuator, complete with fixing screws



08.015.2

Adaptateur double pour boutons de commande montage en panneau (avec vis de fixation)

double adaptor for panel mounting actuator, complete with fixing screws



Boutons commande de montage en panneau

actuators for panel mounting

Sopra
Pneumatic Advanced Systems

bouton poussoir monostable affleurant protected push button

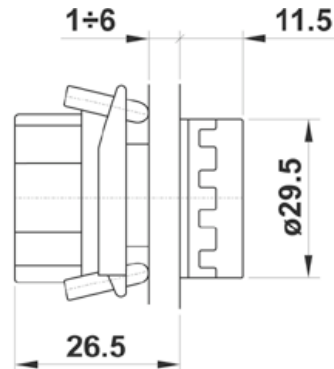
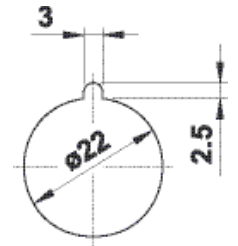
code code	coloris standard standard colours
RM 010	ROUGE, NOIR et BLANC (3 couleurs fournies dans le kit) red, black and white (supplied in kit)

- Les couleurs suivantes sont une alternative disponible et doivent être commandées séparément.

The following colours are available as an alternative and must be ordered separately

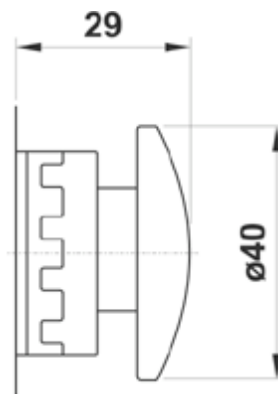
code code	couleur colour
P 22804 V	VERT [green]
P 22804 G	JAUNE [yellow]
P 22804 A	BLEU CIEL [light blue]
P 22804 B	BLANC [white]

Plan de perçage pour le montage du bouton



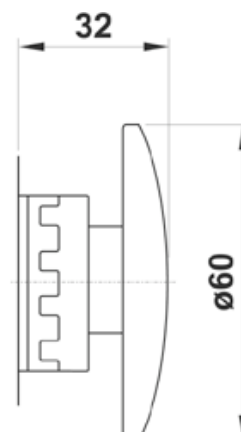
bouton poussoir ø40 ø40 mushroom

code code	description description	couleur colour
RM 050 R	monostable axial [axial mono-stable]	ROUGE [red]
RM 050 N	monostable axial [axial mono-stable]	NOIR [black]
RM 055 R	multidirectionnel [multi-directional]	ROUGE [red]
RM 055 N	multidirectionnel [multi-directional]	NOIR [black]
RM 065 R	bistable déblocage en rotation [turn to unlock]	ROUGE [red]



bouton poussoir ø60 ø60 palm

code code	description description	couleur colour
RM 056 R	multidirectionnel [multi-directional]	ROUGE [red]
RM 066 R	bistable déblocage en rotation [turn to unlock]	ROUGE [red]

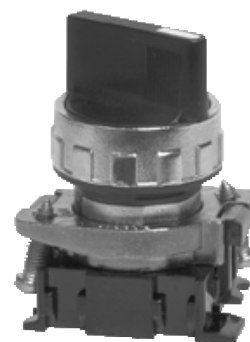
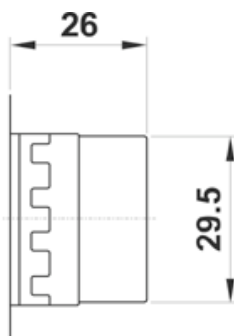


Boutons commande de montage en panneau

actuators for panel mounting

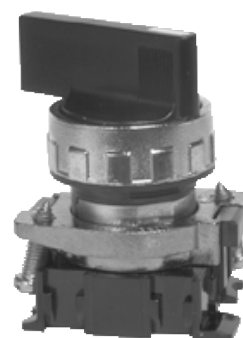
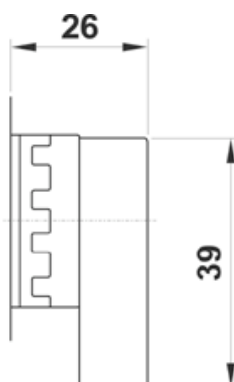
sélecteur à levier court short lever selector

code code	couleur colour	fonction function
RM 300 N	NOIR black	0 1
RM 350 N	NOIR black	0 ← 1
RM 313 N	NOIR black	2 0 1
RM 383 N	NOIR black	2 → 0 ← 1



sélecteur à levier long long lever selector

code code	couleur colour	fonction function
RM 400 N	NOIR black	0 1
RM 450 N	NOIR black	0 ← 1
RM 413 N	NOIR black	2 0 1
RM 483 N	NOIR black	2 → 0 ← 1



sélecteur à clé bistable bi-stable key selector

code code
RM 200 N

