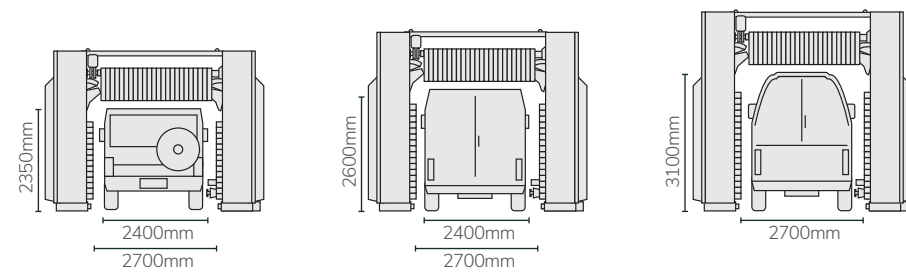


## UNIT DIMENSIONS TECHNICAL DATA

	CL200 STD		CL200 LARGE		
	mod. 240	mod. 260	mod. 240	mod. 260	mod. 310
Machine width	3995		4295		
Machine lenght					
Machine height	3200	3410	3200	3410	3920
Max passing width	2400		2700		
Max vehicle width	2100		2400		
Max vehicle passing height	2435	2550	2350	2550	3050

## DRIVER THROUGH DIMENSIONS



## AVAILABLE COLOURS



## Three models, only one target - The excellence

The Series CL200 is the output of three visions of excellence in the carwash world.

Built with dedication and premium materials, offers exceptional performance and a stunning design.

Choose your preferred model for your needs...

# The Power of future, Today.



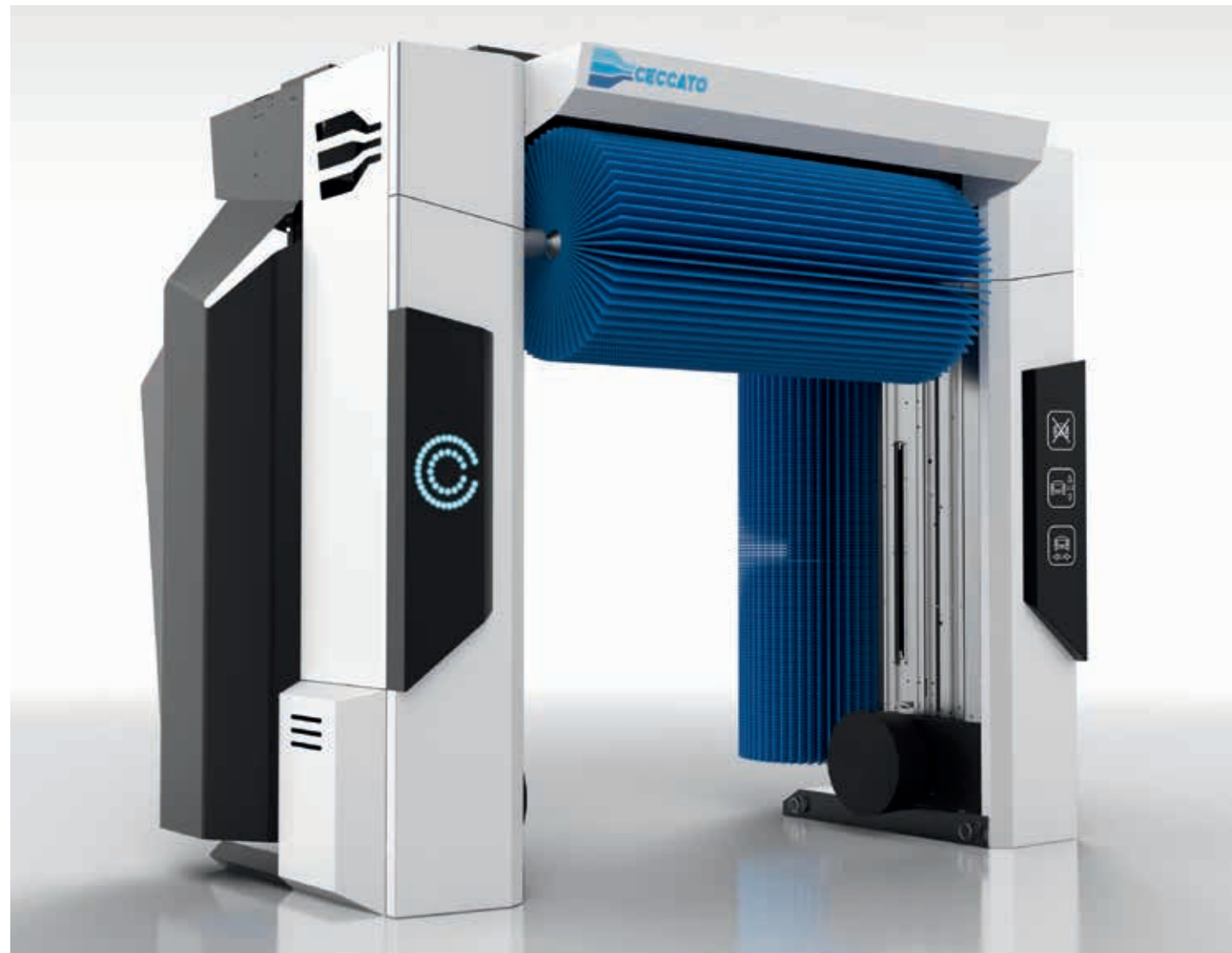
## CL201: The essentiality of Simplicity and elegance

CL201 is the basic version of the CL200 series, an authentic icon of intelligent economy and captivating aesthetics. This portal is designed to offer reliable performance and impeccable cleanliness, while maintaining an affordable investment. Equipped with two oscillating Air Plus dryers, wheelwashers and two dosing pumps (Shampoo and Wax).

### Main Features:

- **Competitive Investment and reduced consumptions**
- Ideal for Car Rentals and Car Dealers: the perfect choice for those businesses that need a quick and reliable carwash machine without a big investment. Thanks to its Air Plus oscillating dryer, the power needed to operate this carwash unit is less than conventional contour following dryer still maintaining a good drying result.

Washing dimensions:  
H240 – L240/270



## CL202: Higher Demand, Higher efficiency

CL202 is the intermediate version of the CL200 Series that unites optimal washing results still considering a good design. Based on the CL201, this variant offers a dryer with contour following blade with two 3 kw motors and two vertical dryers with 4 kw motors.

### Main Features:

- **Low Investment and great performance**
- Best Design: **Shield implies a better looking** to the carwash machine giving a more professional look and better design.
- CL202 is perfect for **car dealers, car rentals, and those carwash stations that firstly approach the automated carwash world**. In fact this machine gives optimal washing and drying quality without the need of an operator.

Washing dimensions:  
H=240-L240/270  
H=260-L240/270  
H=310-L270



## CL203: The Power of Future, Today

CL203 represents the **top of the range in the CL200 Series**. It unites the best washing quality and top design. This variant offers **full horizontal, side and wheels High pressure** combined with an onboard or offboard HP pump. This variant offers also the possibility of **4 dosing pumps**. CL203 offers to the client the best Shield and LED design. (with one C on the left side)

### Main Features:

- It is the perfect choice for car washes that intend to **switch to fully self-service wash** or take advantage of closing hours to offer a self-service carwash. It offers **top-level functionality at an affordable investment**, with an irresistible aesthetic impact thanks to the **LEDs and metal shields**.

Washing dimensions:  
H=240-L240/270  
H=260-L240/270  
H=310-L270

