

Anapurna M2050i prints rigids or rolls at top class productivity.

Anapurna M2050i

Anapurna M2050i is a high-speed UV curable inkjet system for 205 cm wide prints for graphic screen printers, photo shops and sign shops. Top class productivity is ensured with print output at 90 m²/hr.

AGFA 

STAY AHEAD. WITH AGFA GRAPHICS.

Anapurna M2050 i



In-house decoration - dibond

The Anapurna M2050i hybrid printer meets the performance and quality demands of an increasingly professional market – at a highly competitive price point.

High-speed machine

Incorporating the latest generation of print heads with double the amount of print nozzles, the new Konica Minolta KM1024i, the Anapurna M2050i offers a high throughput while maintaining a high level of print quality. Multiple board or borderless printing increases productivity even more.

Exciting prints on a wide range of roll and rigid media

This printer has optimized dot positioning and thus excellent image quality. It also uses the gradient masking during printing to further enhance print quality. The eight 12 picolitre heads guarantee printing of good solids, fine text reproduction of up to 4 pt, good tonal rendering and low ink consumption. The 1024 nozzles produce top quality prints on uncoated rigid media, such as corrugated boards, rigid plastics, exhibition panels, stage graphics and advertising panels, as well as roll media such as film, vinyl and paper, canvas and banners of up to 4.5 cm thick.

Best-in-class Agfa-made inks

Anapurna UV inks deliver fast drying, a wide color gamut and versatile material compatibility for the most demanding wide-format indoor and outdoor applications. Offering very good adhesion on difficult substrates, these inks – both white and color – are the best choice for a wide range of applications. The Anapurna M2050i will make your wide format print-work more exciting with prints that will grab your audience's attention.

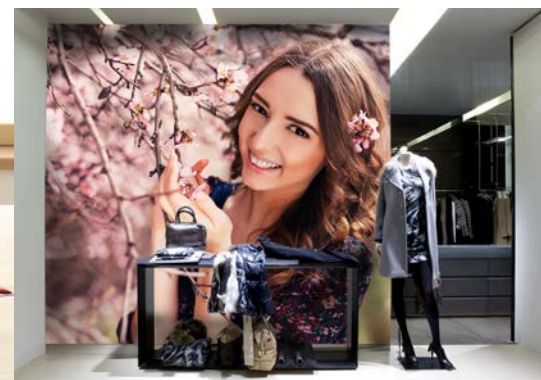
White is beautiful

White ink creates new possibilities for printing on transparent material for backlit or backlit/frontlit applications or printing white as a spot color. You might even consider printing images on dark substrates using white ink only. Stand out and let Anapurna M2050i differentiate your decoration and communication jobs.



In-store communication - paper

Household communication - mireco



In-store communication - backlit

Asanti software optimizes productivity and streamlines your workflow

Asanti workflow automation increases productivity, removes bottlenecks, lowers waste and leads to overall greater efficiencies. Asanti removes the hit-and-miss elements of print production so that you can integrate all of your pre-press elements and the result is a fully accountable end-to-end quality management solution.

Perfect ink droplet control

An ionizer system sees to it that there are no electro-static loads on the substrate, ensuring optimum ink droplet control and therefore delivering the highest print quality.

Flawless and safe media loading and transport

Media loading is very straightforward with automated features such as the media registration bar and head height adjustment. The Anapurna M2050i also incorporates a set of shuttle safety sensors to prevent print heads from touching the substrate. The Anapurna M2050i's automatic vacuum system delivers an equal vacuum throughout the whole printing process, whether printing roll or rigid materials. This ensures flawless media transport, giving accurate print results at all times!

Automatic board feeding

The printer can have an automatic board feeder added in order to increase productivity even more. The optional automated board feeding table provides an automated solution for volume printing of small board sizes.

Ink monitoring and thin ink layer technology

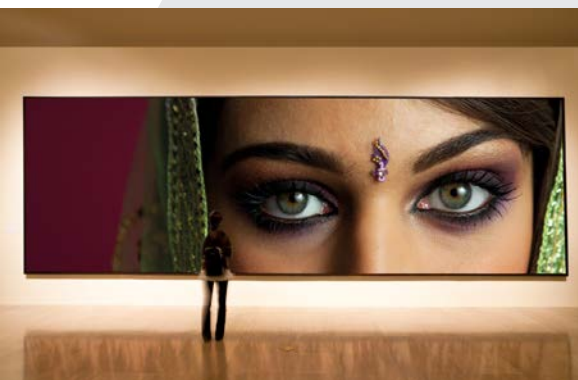
Agfa Graphics' Anapurna UV-curable inks provide a large color gamut, high color vibrancy and, thanks to good ink adhesion, high image longevity and outdoor resistance. Anapurna inks deliver the same high-quality results batch after batch. Thanks to the new ink filling system it is now even easier to do a spotless refill of your ink containers. Anapurna inks allow instant curing, making prints ready to handle immediately after leaving the engine. Thanks to their high-pigment load, the ink consumption per square metre is low. This so-called 'thin ink layer' technology saves costs and results in nicer looking prints.

White ink management concept

Anapurna M2050i has a highly reliable white ink management system, consisting of a separate circulation system, a separate under-pressure regulation and a separate cleaning circuit. The white ink tank is equipped with a stirring mechanism to keep the ink properly mixed at all times. The Anapurna M2050 has the possibility to run pre- or post-white in one production run, greatly expanding application possibilities.

User-friendly operating system

All settings are conveniently arranged in a powerful straightforward graphic user interface on a swivel-arm mounted monitor. Printed files are being spooled, viewed and stored by an internal bitmap server with a HD of 1 TB for ripped images for fast spooling and secure transfer of big amounts of data.



Art reproduction - wood

•Anapurna M2050i



POSITIONING

- Perfect fit for digital printers, photo shops and mid-size graphic screen printers
- Heavy-duty, turnkey and complete industrial UV inkjet system
- Top speed up to 101 m²/hr
- Excellent solids and signs in 8-pass printing
- Multiple board printing
- Borderless printing

DESIGN CONCEPT

- Robust engineering - professional hybrid UV wide-format printer
- Includes all necessary components like the vacuum ring-blower, shuttle safety sensors, media transport and roll-up systems for guaranteed peak production

ENGINE FEATURES

- Reinforced beam
- Automated media positioning bar mounted on table - registration of rigids
- Divided vacuum table, 4 parts
- 1,5 kW ring-blower for strong vacuum situated in the engine for less noise
- Accurate media transport/feed
- Powerful fastscan motor
- Automatic control of vacuum strength (inverter based)
- Ionization bar mounted on each side of carriage to remove electrostatic load on media
- Shuttle safety sensors on each side of the carriage
- Extended basic frame, to support ring-blower
- Black colored media transport belt
- Network and USB3 (2) connection
- On-board controller with touchscreen

APPLICATIONS

- Banners, posters, exhibition graphics, POP, mock-ups, backlit, frontlit, self-adhesives (labels)
- Niche application: DVD printing, wood, art reproductions, personalized object printing (mouse mats) ...
- Party gadgets (beer coasters...)
- Architectural and interior decoration, ceramics printing

TEXT QUALITY

- Positive: 4 point
- Negative: 6 point

SUBSTRATE FLEXIBILITY

- Up to 207 cm media width
- Up to 205 cm print width
- Borderless printing: up to 199 cm media width
- Multiple board printing: min size: A2, landscape
- Media thickness up to 45 mm
- Media weight up to 10 kg/m²
- 4 rigid tables (2 rear & 2 front)
Extends max length 3.2 m
- Roll-to-roll: max roll weight: 50 kg
max roll diameter: 36 cm

PRINT SPEEDS

- | | |
|--------------------|-----------------------|
| • Draft: | 90 m ² /hr |
| • Express: | 63 m ² /hr |
| • Production: | 32 m ² /hr |
| • Standard: | 25 m ² /hr |
| • High quality: | 19 m ² /hr |
| • High definition: | 15 m ² /hr |

INKS

7 Anapurna M G2 UV-curable inks (CMYKLCm and white)

HEADS

- 6 Konica-Minolta KM1024i-heads: 1024 nozzles/head with a droplet volume of 12pl (colors)
- 2 Konica-Minolta KM1024i-heads: 30pl (white in line)

ENGINE DIMENSIONS

Engine dimensions
4580 (W) x 1690 (H) x 1540 (D) mm

WEIGHT

1800 kg

ELECTRICITY

- 380 V 3-phase star connection with Neutral wire (3x 32A*) 50/60Hz
- 230V 3-phase delta connection without Neutral wire (3x 30A*) 50/60 Hz

SYSTEM INTEGRATION RIP

- Integrated production solution with Asanti, other RIPs on request
- Ready to use Anapurna M2050i media/ink profiles available (Asanti)