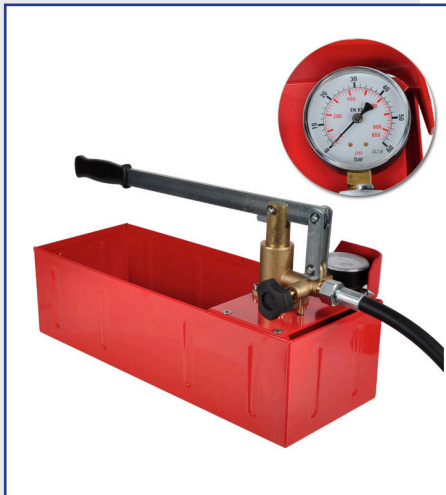


Pressure Testing Pump

Languages > 

Pressure Testing Pump „Binda PT



Pressure Testing Pump
 Item No.: 25712000000

Use Instructions

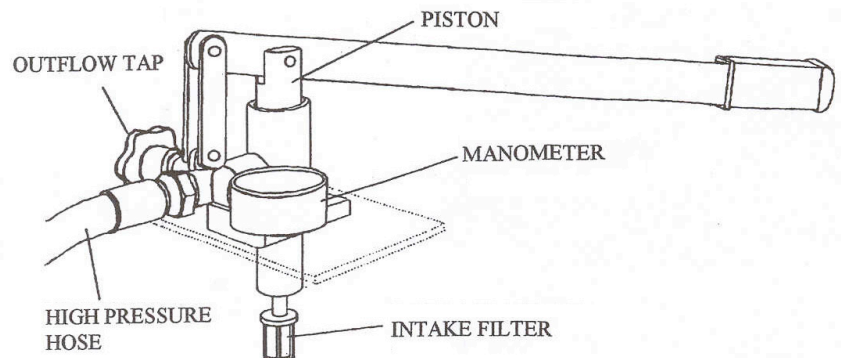
PURPOSE OF USE

The horizontal testing pump is purpose-made to test water. The builder refuse every responsibility for damages or bad working if the pump is used incorrectly, for a purpose for which it was not intended or is tampered.

Tank capacity	12 L	Dimensions	500x190x140 mm
Max. pressure	50 bar	Weight	7 Kg.
Flow rate	0,025 L / cycle-action	Hose connection	1/2"

INSTRUCTIONS

1. Put the pump on safe, horizontal surface. Full the tank with at least 9 l of clean water.
2. If possible, fill the water system with a motor pump.
3. Connect the hose to the water system to test. Make sure that the outflow tap is closed.
4. Set the water system to the requested pressure. To keep the water system at the requested pressure for a long time without leaving the pump connected, we suggest you to use HELP not given with the pump.
5. At the end the test, open the outflow tap, then remove the high pressure hose from the water system.



WARNINGS

Use the pump only for the purpose for which intended. Comply general safety instructions. Allow only trained people to use the pump. Keep children distant from the pump and its parts. Keep the work area tidy. Clutter can prove dangerous. Avoid dangerous ambient influences (e.g. inflammable fluids or gases). Provide adequate lighting at the workplace. Wear tight work clothes, keep long hair well clear, take off jewels and similar. Use safe glasses. Take up a firm standing position during operation. Check the unit for damage. Replace worn parts as early as possible. Secure the surrounding area against access by unauthorized people during pressure testing. The acoustic pressure level during usage is less than 83 dB.

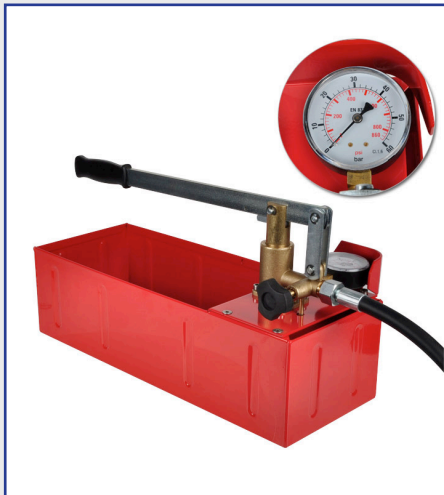
The builder refuse every responsibility for damage due to missing respect of purpose of use, instructions and warnings.

* subject to modifications

Pressure Testing Pump

Languages > 

Pressure Testing Pump „Binda PT



Pressure Testing Pump
Item No.: 25712000000

Use Instructions

MAINTENANCE

Regularly grease the pump piston (8) and clean the intake filter (14) and the valves.

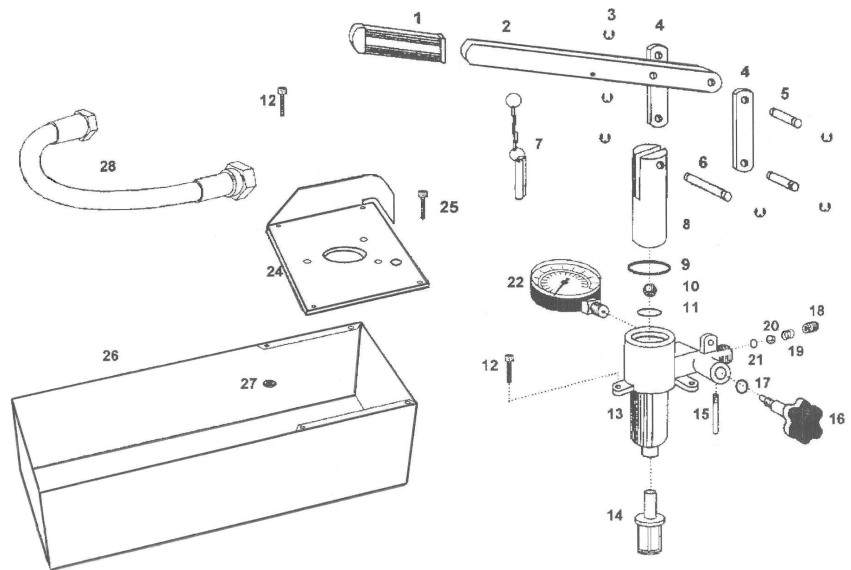
Regularly check unit and hose for damages.

In case of bad pump working (required pressure is not achieved; the pump doesn't work with regularity; the pump does not keep pressure):

- Check if intake filter is clean.
- Check outflow valve: unscrew the plug (18), take the spring (19) and the ball (20). Clean the ball. Put the ball and the spring inside the valve. Screw the tap.

Use only original spare parts. All repair and maintenance works must be performed only by specialist personnel or by people familiar with the pump.

If you decide not to use more the pump, don't let unauthorized people use the unit.



1	LEVER HANDLE	15	OUTFLOW PIPE
2	LEVER	16	OUTFLOW TAP
3	SEEGER (x 6)	17	SEAL
4	LEVER SUPPORT (x 2)	18	PLUG
5	PIVOT (x 2)	19	SPRING
6	LONG PIVOT	20	BALL
7	LEVER BLOCKING (OPTIONAL)	21	SEAL
8	PISTON	22	MANOMETER
9	SEAL	24	TANK PLATE
10	BALL	25	SCREW (x 2)
11	SEAL	26	TANK
12	SCREW (x 5)	27	NUT (x 4)
13	PUMP BODY	28	HOSE
14	INTAKE FILTER		

* subject to modifications